

Fresno Regional Workforce Development Board

Welcome to the Rapid Response COVID-19-Information for Employees

INSTRUCTIONS:

- Make sure you are on mute.
- Please use the Chat feature and send a private message to the Host-Martha Espinosa-Kroll providing your:
 1. First and Last Name
 2. email address
 3. Company/Organization you work(ed) for



Rapid Response SERVICES

Rapid Response is a proactive business-focused and flexible strategy designed to respond to layoffs and closings by quickly coordinating services to provide immediate aid to companies and their affected workers.



Fresno Regional WDB
**Workforce
Connection**

This WIOA, Title 1-financially assisted program/service is an equal opportunity employer/program. Auxiliary aids and services are available upon request to people with disabilities and/or limited English

A proud partner of America's Job Center of California™ network.

AGENDA



(NAMI)

National Alliance on Mental Illness,
Christina Valdez-Roup



(EDD)

Employment Development
Department



(DSS)

Department of Social Services
Jose Corchado



Clinica Sierra Vista,
Andrea Bolanos



(RHA)

Richard Heath and
Associates,
May Ly



Workforce Connection,
Annette Watkins



(EOC)

Economic Opportunities Commission,
Glenn Elizarde



Resources,
Martha Espinosa

FIND HELP, FIND HOPE!



CALL THE NAMI HELPLINE

800-950-6264

OR, IN A CRISIS? TEXT **NAMI** TO **741741**

Further Information Or Support:

<https://namifresno.org/>

NAMI Fresno's HelpLine And Email

Phone: [\(559\) 224-2469](tel:5592242469) (not a crisis line)

Address: 7545 North Del Mar #105, Fresno, CA 93711

Email Address: info@namifresno.org



Fresno County
Behavioral Health

WARM Line
(559) 600-WARM (9276)

The DBH COVID-19 Warm Line provides non-emergency emotional and coping support to community members. Warm line operators provide supportive listening, practical coping ideas, and information on how to get connected to behavioral health services.

DBH COVID-19 Warm Line:

- 559-600-WARM (9276)
- Monday - Friday, 8:00AM to 5:00PM

For Crisis:

- Emergency - Dial 911
- Suicide Prevention Lifeline 1-800-273-8255
- Fresno County Access Line 1-800-654-3937
- Crisis Text Line 741741



For other support and assistance:

- NAMI-Fresno Warm-line (559) 224-2469
- Department of Public Health 600-INFO – for general information about COVID-19
- 211 (general resources)
- California Peer Run Warm-Line 1 (855) 845-7415



Website Resources:

Fresno County Public Health

- [COVID-19 Coronavirus Information](#)
- [Public Health Resources](#)

Fresno County Behavioral Health

- [Behavioral Health Resources](#)
- [fresnocares.org - Suicide Prevention](#)
- [Facebook - Fresno County Behavioral Health](#)



THE COUNTY OF FRESNO
Department of
Behavioral Health



**Employment Development
Department**
Monica Diaz
EDD Representative

EDD

- Job Placement and Referrals
- Unemployment Insurance
- Disability Insurance
- Paid Family Leave
- Employment and Training
- Veteran's Services
- Labor Market Information
- Payroll Taxes
- And More

UNEMPLOYMENT

Provides income to workers who become unemployed through no fault of their own and other work is not available.

- Your place of employment has closed down due to COVID-19 restrictions
- Reduction in hours or wages
- You are self-employed

School Closures

- If your child's school is closed, and you have to miss work to be there for them, you may be eligible for Unemployment Insurance benefits. Eligibility considerations include if you have no other care options and if you are unable to continue working your normal hours remotely. File an Unemployment Insurance claim and our EDD representatives will decide if you are eligible.

THREE WAYS TO FILE FOR UNEMPLOYMENT

1. **PHONE** **1-800-300-5616** Monday-Friday 8 a.m.-12 p.m.
 2. **On-line (internet)** <https://www.edd.ca.gov>
 3. **Mail or Fax** (*information listed on form*) Call 559-230-4092 to schedule an appointment with Workforce Connection to pick up copies.
- **Tutorials**-<https://www.youtube.com/user/CaliforniaEDD/videos>
 - **Latest Information** -https://www.edd.ca.gov/about_edd/coronavirus-2019.htm
 - **Questions about your case**- Email : WSBFresnoReferrals@edd.ca.gov

UNEMPLOYMENT

- ❑ If you file in April they will take all of last years wages and from those 12 months, they take the highest quarter to determine your weekly benefit amount which begins on.

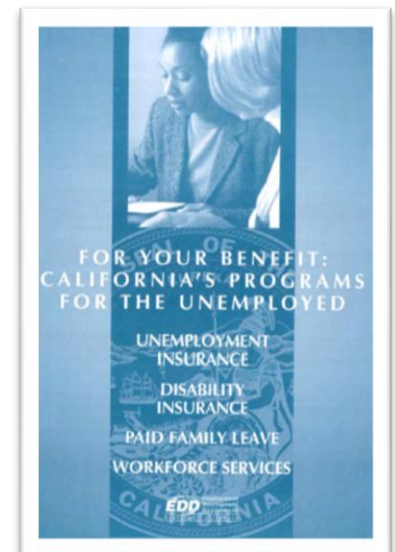
Unemployment Compensation, payable for any week is equal to:

- The amount determined under the State law, plus
- An additional amount of \$600

For the week ending April 11, the EDD will begin issuing the new \$600 additional unemployment benefit.

The first week the additional payments can be made is for the week ending April 4, not before. Separate retroactive payments will be automatically issued soon to those who had an active claim that week, and the \$600 extra payments can continue to those who remain impacted and otherwise eligible for benefits through the week ending July 31, 2020.

- ❑ There is a one week waiting period. **(This has been suspended)**
- ❑ Maximum weeks to collect unemployment is 26 weeks, which is equal to 6 months.
- ❑ There are no federal extensions at this time.
**(Federal Government will fund an additional 13 weeks;
The total number of weeks for which a covered individual may
receive assistance cannot exceed 39 weeks.)**
- ❑ Certify every 2 weeks- **(This has been suspended)**



Pandemic Unemployment Assistance (PUA) Program

<https://www.labor.ca.gov/pandemic-unemployment-assistance-pua-program/>

The EDD will begin accepting online applications for this program on Tuesday, April 28.

HOW TO APPLY

1. **PHONE 1-800-300-5616** Monday-Friday 8 a.m.-12 p.m.
2. On-line (internet) <https://www.edd.ca.gov>
3. Mail or Fax (*information listed on form*) Call 559-230-4092 to schedule an appointment with Workforce Connection to pick up copies.

ELIGIBILITY

The PUA benefits are payable if you don't qualify for regular Unemployment Insurance (UI) benefits in California or another state and also do not qualify for state Disability Insurance or Paid Family Leave benefits. This includes:

- Business owners
- Self-employed individuals
- Independent contractors

You can also be eligible if you qualified for regular UI benefits, but have already collected all of those benefits.

If you are not a US citizen, you can only be paid PUA benefits if you were legally working in the US when you were affected by COVID-19. You can only claim benefits for the weeks that you were legally allowed to work.

PUA ELIGIBILITY-CONTINUED

You must also meet one of the following criteria:

- You have been diagnosed with COVID-19 or are experiencing symptoms of COVID-19 and are seeking a medical diagnosis.
- You are unable to work because a health care provider advised you to self-quarantine due to concerns related to COVID-19.
- A member of your household has been diagnosed with COVID-19.
- You are providing care for a family member or a member of your household who has been diagnosed with COVID-19.
- A child or other person in the household for whom you have primary caregiving responsibility is unable to attend school or another facility that is closed as a direct result of the COVID-19 and the school or facility care is required for you to work.
- You became the breadwinner or major support for a household because the head of the household has died as a direct result of COVID-19.
- You have to quit your job as a direct result of COVID-19.
- Your place of employment is closed as a direct result of COVID-19.
- You were scheduled to start a job that is now unavailable as a direct result of the COVID-19 public health emergency.
- You are unable to reach the place of employment as a direct result of the COVID-19 public health emergency.
- If you work as an independent contractor with reportable income, you may also qualify for PUA benefits if you are unemployed, partially employed, or unable or unavailable to work because the COVID-19 public health emergency has severely limited your ability to continue performing your customary work activities, and has thereby forced you to stop working.

PUA BENEFITS

In order to provide benefits as quickly as possible, payments will be issued in phases. If you qualify for PUA, and depending on the effective date of your PUA claim, the **initial payments** you will receive are as follows:

- Phase 1
\$167 per week for each week you were unemployed from **February 2, 2020 to March 28, 2020** due to a COVID-19 related reason.
- Phase 2
\$167 plus \$600 per week for each week you were unemployed from **March 29, 2020 to July 25, 2020**, due to a COVID-19 related reason.
- Phase 3
\$167 per week, for each week from **July 26, 2020 to December 26, 2020**, that you are unemployed due to a COVID-19 related reason, up to a total of 39 weeks (minus any weeks of regular UI and certain extended UI benefits that you have received).

An additional \$600 will be added to each PUA weekly benefit amount as part of the separate CARES Act Pandemic Additional Compensation program. Only the weeks of a claim between March 29 and July 25 are eligible for the extra \$600 payments. Under the CARES Act of 2020, the \$600 additional benefits are available through July 31, 2020. However, the US Department of Labor has issued guidance to clarify that, for most Californians, the last full week of benefits will end on July 25, 2020. Similarly, the PUA program has a legislative end date of December 31, 2020, but for Californians, the last full week of benefits will end on December 26, 2020.

Benefits can be retroactive to weeks starting on or after February 2, 2020, depending on your last day of work due to COVID-19 and regardless of when you submitted your claim application. The effective date of your claim will begin the Sunday of the week when you last worked and became unemployed due to reasons directly related to COVID-19.

Unemployment Insurance (UI)

- Get info on how to file a new claim or reopen an existing claim.
- Get info on your last payment issued.
- Certify for benefits using EDD Tele-CertSM.
- Request copies of your 1099G tax information.
- Find a local job center.

Available 24 hours per day, 7 days per week.

Automated
Self-Service Line
1-866-333-4606

- For general or technical questions such as how to use UI Online, registration, password reset, and EDD Customer Account Number.
- No access to claim or payment information.

Open 8 a.m. to 8 p.m. (PT), 7 days per week.

General or
Technical Support
1-833-978-2511

- For help with filing a UI claim or get payment information.

Open 8 a.m. to 12 p.m. (PT), Monday through Friday,
except state holidays.

Claims Support
1-800-300-5616

CAL JOBS

If you file a claim, you are required to register and create a resume on Cal-JOBS. <https://www.caljobs.ca.gov/>

California Training Benefits

- ☐ If you feel you need to return to school to upgrade your skills, you need to read this pamphlet.
- ☐ You need to make sure you inquire about CTB by the 16th week of collecting unemployment, otherwise you will be ineligible.

DISABILITY

Provides short-term, partial wage replacement benefits to workers who are unable to work due to a non-work related illness or injury, pregnancy or Childbirth.

WAYS TO FILE:

- **Online:** www.edd.ca.gov/disability
- **Mail/Fax**

For Assistance Call: 1-800-480-3287

Sick or Quarantined

If you're unable to work due to having or being exposed to COVID-19 (certified by a medical professional), you can [file a Disability Insurance \(DI\) claim](#). DI provides short-term benefit payments to eligible workers who have a full or partial loss of wages due to a non-work-related illness, injury, or pregnancy. Benefit amounts are approximately 60-70 percent of wages (depending on income) and range from \$50-\$1,300 a week.

Telehealth and virtual appointments are acceptable for a physical examination, but medical certifications are still required.

The [Governor's Executive Order](#) waives the one-week unpaid waiting period, so you can collect DI benefits for the first week you are out of work. If you are eligible, the EDD processes and issues payments within a few weeks of receiving a claim.

PAID FAMILY LEAVE

- Partial wage replacement benefits to individuals who need to take time off work to care for a seriously ill child, parent, parent in law, grandparent, grandchild, sibling, spouse or registered domestic partner. Benefits are also available to parents who need time to bond with a new entering their family either by birth, adoption, or foster care placement
- There is no waiting period.

WAYS TO FILE

Online: https://www.edd.ca.gov/disability/SDI_Online.htm

For more information go to:

www.edd.ca.gov/disability/paid_family_leave.htm

Call Monday-Friday 8 a.m.-5 p.m. 1-877-238-4373

Mail: You can obtain a paper *Claim for Paid Family Leave (PFL) Benefits* (DE 2501F) form a few different ways:

- Visit Online Forms and Publications <https://forms.edd.ca.gov/forms> and order a form online. A form will be mailed to you.
- Obtain the form from your physician/practitioner or employer.
- Visit an [SDI Office](#).

Caregiving

- If you're unable to work because you are caring for an ill or quarantined family member with COVID-19 (certified by a medical professional), you can [file a Paid Family Leave \(PFL\) claim](#). PFL provides up to six weeks of benefit payments to eligible workers who have a full or partial loss of wages because they need time off work to care for a seriously ill family member or to bond with a new child. Benefit amounts are approximately 60-70 percent of wages (depending on income) and range from \$50-\$1,300 a week. If you are eligible, the EDD processes and issues payments within a few weeks of receiving a claim.
- Telehealth and virtual appointments are acceptable for a physical examination, but medical certifications are still required.



VETERAN RESOURCES

We do have Veterans representatives here at our offices. We are directed to give them the main switchboard number 230-4158. We're proud to provide priority services to all veterans, and to help you and your eligible spouse find jobs and maximize your employment and training opportunities. Our veteran representatives specialize in helping you return to work and offer the following services:

- ❖ A 24-hour priority hold on all job listings just for veterans
- ❖ Customized job search assistance
- ❖ Job fairs and workshops
- ❖ Employer recruitments
- ❖ Other events and resources

https://www.edd.ca.gov/jobs_and_training/services_for_veterans.htm



DEPARTMENT OF SOCIAL SERVICES

JOSE CORCHADO

DSS Lobby Closures Effective 4/1/20

- For questions regarding your Cal Fresh, Medi-Cal or CalWORKs case you can contact the Call Center Monday - Friday 7:30am to 4:30pm at 1-855-832-8082
- Apply for benefits www.mybenefitscalwin.org
- Report Child Abuse or Neglect – 24 Hour Hotline 600-8320
- Report Elder/Dependent Adult Abuse- 24 Hour Hotline 600-3383 or (800) 418-1426

Public Assistance

- **OPEN FOR SELF SERVICES & EMERGENCY SERVICES – FRESNO METRO & REGIONAL OFFICES**
 - Heritage- 3151 N. Millbrook- Self Service and Scheduled EBT/Emergency BIC
 - Main- 4455 E. Kings Canyon Rd- Self Service and Scheduled EBT/Emergency BIC
 - "E" Street - 1209 "E" Street (SOFT CLOSE –General Relief Clients with No Address or Phone)
 - Selma- 3800 N. McCall Ave- Self Service and Scheduled EBT/Emergency BIC
 - Reedley-1680 E. Manning Ave- Self Service and Scheduled EBT/Emergency BIC
 - Coalinga- 311 Coalinga Plaza- Self Service and Scheduled EBT/Emergency BIC
 - Kerman- 15180 W. Whitesbridge Ave-Self Service and Scheduled EBT/Emergency BIC

• **OPEN FOR LIMITED SERVICES**

- Fairgrounds - 4468 E. Kings Canyon Rd – **DROP BOX ONLY**
- Barton- 4499 E. Kings Canyon Rd- Homeless/General Relief clients with NO phone access for State Hearing Purposes Only

• **CLOSED TO THE PUBLIC**

- West Fresno, Sunnyside, Senior Resource Center, Commissary 1st and 2nd and Huntington Hall – **CLOSED**

Child Welfare

• **OPEN FOR LIMITED SERVICES**

- "L" Street - 1404 "L" Street– **Services requiring in person contact**
- Taft- 3688 E. Shields Ave – **Limited Services to Foster Youth**

• **CLOSED TO THE PUBLIC**

- West Fresno Regional Center, Center Mall Court, Fulton and Gallery Plaza – **CLOSED**

Fresno County Department of Social Services resource information

- Contact MAP Point (559) 512-6777 to find emergency shelter space currently available. DSS continues to work with partner agencies to bring more facilities online.
- DSS online and call center are a convenient and secure way to apply for program services, maintain eligibility and seek answers to your questions. Online Resources:

• **Apply for Benefits at www.mybenefitscalwin.org**

- Benefit programs: CalFresh, Medi-Cal, CalWORKs, and General Relief
- You will be contacted by telephone and mail to inform you of the date and time of your telephone interview.

• **Personal Access to Social Services (P.A.S.S.) – Visit DSSPASS.fresnocountyca.gov**

- Access Case Information
- Download Grant Verifications (WHIS reports)
- Upload Documents and verifications

• **Need to reschedule your appointment or missed your appointment? Call: 1-855-832-8082**

- Hours of operations: Monday through Friday from 7:30 a.m. - 4:30 p.m.

• **Request a new Medi-Cal BIC card by calling 1-877-600-1377 and follow the prompts**

- Available 24 hours a day

• **Request a replacement EBT card by calling 1-877-328-9677**

- Available 24 hours a day
- You will never be asked for your PIN Number

• **24/7 Automated System: 1-877-600-1377**

- Case and Benefit Information

CalFresh (Food Stamps)

Provides low-income households with monthly benefits

Supplements households income for the purchase of food items

Who can get CalFresh:

- Families
- Single Adults
- Unemployed / Employed
- Elderly or disabled
- Homeless
- College students
 - Working 20 hours per week

CalWORKs

(Cash aid - families with children)

Automated information about your Cash,
Food, or Medi-Cal case:

Access your case online at:

<https://www.mybenefitscalwin.org/>

If you need to speak to a worker,
1-855-832-8082

between 7:30 am-4:30 pm

Any worker who answers the phone will be
able to assist you

MEDI-CAL

Medi-Cal is California's public health insurance program, patterned after the Federal Medicaid program, designed to provide no-cost or low-cost medical benefits to low income individuals and families. Enrollment for Medi-Cal coverage is open all year.

Who May Be Eligible For Medi-Cal

- Children under the age of 21
- Pregnant individuals
- Low income families
- Adults without children, 19 to 64 years of age
- Individuals over 65 years of age
- Individuals with disabilities
- Financial Eligibility
- To be eligible for no cost Medi-Cal, a single adult individual must have an annual income lower than 138 percent of the federal poverty level. For families the income limit may be higher, as it depends on number of individuals in the household. Those exceeding income limits may qualify for low cost health insurance plans through Covered California.
- For certain Medi-Cal programs along with income limits, property limits may apply to all applicants except pregnant individuals and children ages 0 to 18.
- For more information or to apply online, please visit [My Benefits CalWIN](#) or [Covered California](#).

Benefits CalWIN

(www.mybenefitscalwin.org)

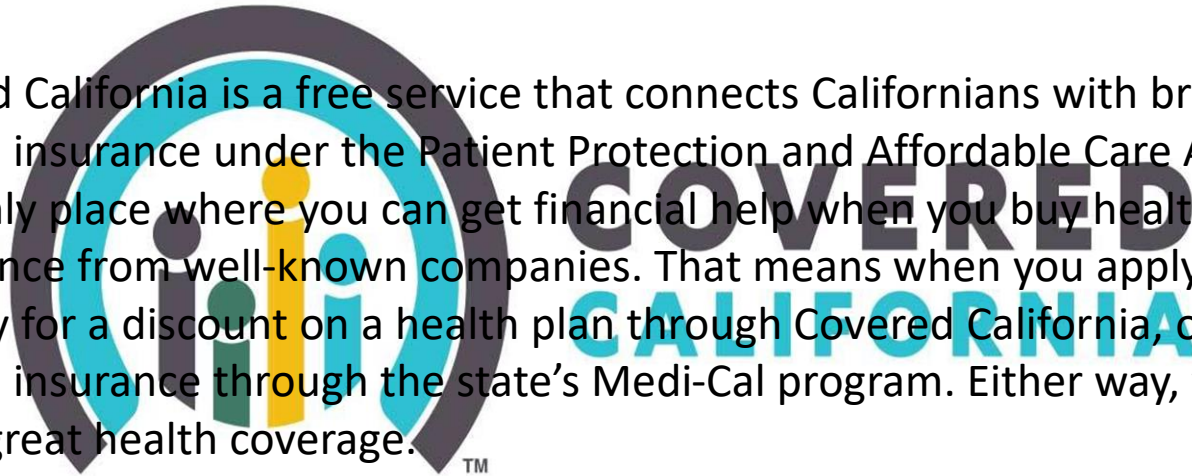
- Online website for clients to apply for Fresno County public assistance programs, including CalWORKs (cash aid), CalFresh (food stamps), and Medi-Cal
- Clients can apply for services 24/7 without having to come into a DSS office.
- Other online services available include: view benefit amount and program status, complete reports, request a Medi-Cal replacement card, request forms.

Personal Access to Social Services (PASS)

- DSSPASS.fresnocountyca.gov


What is Covered CA

Covered California is a free service that connects Californians with brand-name health insurance under the Patient Protection and Affordable Care Act. It's the only place where you can get financial help when you buy health insurance from well-known companies. That means when you apply, you may qualify for a discount on a health plan through Covered California, or get health insurance through the state's Medi-Cal program. Either way, you'll have great health coverage.



TM

Federal Poverty Level



SEE NOTE BELOW
FOR INCOMES IN
THIS RANGE

California State Subsidy

Federal Tax Credit

American Indian / Alaska Native (AIAN) Zero Cost Share


AIAN Limited Cost Share

Silver 94
(100%-150%)

Silver 87
(>150%-200%)

Silver 73
(>200%-250%)

% FPL	0%	100%	138%	150%	200%	213%	250%	266%	300%	322%	400%	600%	
Household Size	1	\$0	\$12,490	\$17,237	\$18,735	\$24,980	\$26,604	\$31,225	\$33,224	\$37,470	\$40,218	\$49,960	\$74,940
	2	\$0	\$16,910	\$23,336	\$25,365	\$33,820	\$36,019	\$42,275	\$44,981	\$50,730	\$54,451	\$67,640	\$101,460
	3	\$0	\$21,330	\$29,436	\$31,995	\$42,660	\$45,433	\$53,325	\$56,738	\$63,990	\$68,683	\$85,320	\$127,980
	4	\$0	\$25,750	\$35,535	\$38,625	\$51,500	\$54,848	\$64,375	\$68,495	\$77,250	\$82,915	\$103,000	\$154,500
	5	\$0	\$30,170	\$41,635	\$45,255	\$60,340	\$64,263	\$75,425	\$80,253	\$90,510	\$97,148	\$120,680	\$181,020
	6	\$0	\$34,590	\$47,735	\$51,885	\$69,180	\$73,677	\$86,475	\$92,010	\$103,770	\$111,380	\$138,360	\$207,540
	7	\$0	\$39,010	\$53,834	\$58,515	\$78,020	\$83,092	\$97,525	\$103,767	\$117,030	\$125,613	\$156,040	\$234,060
	8	\$0	\$43,430	\$59,934	\$65,145	\$86,860	\$92,506	\$108,575	\$115,524	\$130,290	\$139,845	\$173,720	\$260,580
add'l add	\$0	\$4,420	\$6,100	\$6,630	\$8,840	\$9,415	\$11,050	\$11,758	\$13,260	\$14,233	\$17,680	\$26,520	



Medi-Cal for Adults

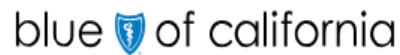
Medi-Cal for Pregnant Women

Medi-Cal Access Program
(for Pregnant Women)

Medi-Cal for Kids
(0-18 Yrs.)

County Children's
Health Initiative
Program

Note: Most consumers up to 138% FPL will be eligible for Medi-Cal. If ineligible for Medi-Cal, consumers may qualify for a Covered California health plan with financial help including: federal tax credit, California state subsidy, Enhanced Silver plans and AIAN plans.



Sliding Fee Scale at Clinica Sierra Vista

The discount program is for patients without health insurance or basic health coverage who cannot afford the cost of their medical or dental consultation. You may be eligible for Clinica Sierra Vista's discount program. The discount is based on family size and household income.

- Covers Medical and Dental services*, and specialty services*

*cost varies

Family Size	Gross Household Monthly Income									
	0% - 100%	101% - 133%	134% - 166%	167% - 200%	201%+					
1	0 - 1012	1,013 - 1,346	1,347 - 1,679	1,680 - 2,023	2,024					
2	0 - 1372	1,373 - 1,824	1,825 - 2,277	2,278 - 2,743	2,744					
3	0 - 1732	1,733 - 2,303	2,304 - 2,875	2,876 - 3,463	3,464					
4	0 - 2092	2,093 - 2,782	2,783 - 3,472	3,473 - 4,183	4,184					
5	0 - 2452	2,453 - 3,261	3,262 - 4,070	4,071 - 4,903	4,904					
6	0 - 2812	2,813 - 3,740	3,741 - 4,667	4,668 - 5,623	5,624					
7	0 - 3172	3,173 - 4,218	4,219 - 5,265	5,266 - 6,343	6,344					
8	0 - 3532	3,533 - 4,697	4,698 - 5,863	5,864 - 7,063	7,064					
9	0 - 3892	3,893 - 5,176	5,177 - 6,460	6,461 - 7,783	7,784					
10	0 - 4252	4,253 - 5,655	5,656 - 7,058	7,059 - 8,503	8,504					
11	0 - 4612	4,613 - 6,134	6,135 - 7,655	7,656 - 9,223	9,224					
12	0 - 4972	4,973 - 6,612	6,613 - 8,253	8,254 - 9,943	9,944					
13	0 - 5332	5,333 - 7,091	7,092 - 8,851	8,852 - 10,663	10,664					
14	0 - 5692	5,693 - 7,570	7,571 - 9,448	9,449 - 11,383	11,384					
15	0 - 6052	6,053 - 8,049	8,050 - 10,046	10,047 - 12,103	12,104					

FCL/Category	610/A				625/B				650/C				675/D	699/SP
--------------	-------	--	--	--	-------	--	--	--	-------	--	--	--	-------	--------

Fees	Nominal Fee \$10.00													100% of charges
					\$20.00				\$30.00				\$40.00	

Category	Medical	Dental
A	\$10	\$40
B	\$20	50%
C	\$30	75%
D	\$40	75%

Clinica Sierra Vista

Clinica Sierra Vista offers the following programs:

- Family Medicine
- Behavioral Health Services
- Internal Medicine
- Comprehensive Health Services
- Pediatrics
- Comprehensive Prenatal Specialty Services
- OBGYN
- Health Insurance Assistance Services
- Podology
- Nutrition Program WIC
- Vaccinations

Clinica Sierra Vista Medical Centers

Elm Walk-In Clinic

**2740 S. Elm Avenue
Fresno, CA 93706**

Monday - Sunday, 8:00 am – 8:00 pm

Elm Family Community Health Center

**2740 S. Elm Avenue
Fresno, CA 93706
559-457-5200**

Monday - Saturday, 8:00 am – 7:00 pm

Elm Women's & Pediatric Community Health Center

**2760 S. Elm Avenue
Fresno, CA 93706
559-457-5300**

Monday - Friday, 8:00 am – 7:00 pm

Garland Community Health Center

**3727 N. First Street, Suite 106
Fresno, CA 93726
559-457-6900**

Monday - Friday, 8:00 am – 5:00 pm

Gaston Health and Wellness Center

**1120 E. Church Avenue
Fresno, CA 93706
559-457-6700**

Monday - Friday, 7:30 am – 4:00 pm

North Fine Community Health Center

**1945 N. Fine Avenue, Suite 100
Fresno, CA 93727
559-457-5650**

Monday - Friday, 8:00 am – 5:00 pm

Orange & Butler Community Health Center

**1350 S. Orange Avenue
Fresno, CA 93702
559-457-5400**

Monday - Friday, 8:00 am – 5:00 pm

RMC Community Health Center

**2505 E. Divisadero Street
Fresno, CA 93721
559-457-5500**

Monday - Saturday, 8:00 am – 5:00 pm

West Fresno Community Health Center

**302 Fresno Street, Suite 101
Fresno, CA 93706
559-457-5700**

Monday - Friday, 8:00 am – 5:00 pm

West Shaw Community Health Center

**3645 W Shaw Avenue, Suite 101
Fresno, CA 93711
559-457-6800**

Monday - Friday, 8:30 am - 5:30 pm

Dental Offices and Behavioral Health

Dental Centers

Dental Center - Elm

2756 S. Elm Avenue

Fresno, CA 93706

559-457-5345

Monday - Saturday, 8:00 am – 7:00 pm

Dental Center - West Fresno

302 Fresno Street, Suite 204

Fresno, CA 93706

559-457-5780

Monday - Friday, 8:00 am – 5:00 pm

Behavioral Health Services in the following Health Centers

Community Resource Center

1305 E. Divisadero Avenue

559-457-5960

Elm Family Community Health Center

2740 S. Elm Avenue

Centro de Salud - Gaston

1120 E. Church Avenue

Centro de Salud - North Fine

1945 N. Fine Avenue, Suite 100

Centro de Salud - Orange & Butler

1350 S. Orange Avenue

Centro de Salud - West Shaw

3451 W. Shaw Avenue, Suite 102

SPECIALTY BEHAVIORAL HEALTH SERVICES

North Fine - Adultos

2002 N. Fine Avenue, Suite 100

559-457-6975

North Fine - Niños

2010 N. Fine Avenue, Suite 105

559-457-6976

West Fresno - Adultos y Niños

302 Fresno Street, Suite 106

559-457-5750

West Shaw - Adultos

3451 W. Shaw Avenue, Suite

101

West Shaw - Niños

3451 W. Shaw Avenue, Suite

102

For a medical appointment please call:

1-833-278-4584

For questions about Health Insurance

Eligibility please call

1-855-867-7216

Community Resource Center

559-457-5962





CALIFORNIA'S LOW COST AUTO

BY MAY LY, PROGRAM SPECIALIST



CALIFORNIA'S
LOW COST
AUTO INSURANCE



CALIFORNIA
DEPARTMENT OF INSURANCE



IT'S THE LAW

CALIFORNIA LAW REQUIRES ALL DRIVERS OF VEHICLES WITHIN THE STATE MAINTAIN EVIDENCE OF FINANCIAL RESPONSIBILITY

CA LOW COST AUTO PROGRAM (CLCA) WAS ESTABLISHED BY THE LEGISLATURE, PURSUANT TO **CALIFORNIA INSURANCE CODE SECTION 11629.7**

CLCA IS SPONSORED BY THE CALIFORNIA DEPARTMENT OF INSURANCE AND MANAGED BY THE CALIFORNIA AUTOMOBILE ASSIGNED RISK PLAN (CAARP) TO PROVIDES AFFORDABLE, LOW COST LIABILITY INSURANCE TO CALIFORNIA DRIVERS WHO MEET INCOME AND ELIGIBILITY GUIDELINES

- IMPROVE PUBLIC SAFETY
- DECREASE THE NUMBER OF UNINSURED DRIVERS AND HIT AND RUNS
- BENEFIT LOW TO MODERATE INCOME DRIVERS

WORKFORCE BENEFITS



JOB SEEKERS WHO DRIVE TO AND FROM

Training/Education

Job interviews

Work, and other reasons to be on the road



LESS STRAIN ON HOUSEHOLD FINANCES

Costs less and allows extra \$\$ for other needs

Peace of mind while on the road

Share with others you know

ELIGIBILITY



VALID CDL/AB60



VEHICLE VALUE
\$25,000 OR LESS



MEET INCOME
GUIDELINES



BE AT LEAST 16
YEARS OLD

APPLY AT [MYLOWCOSTAUTO.COM](https://mylowcostauto.com)

APPLICATION PROCESS IS 100% ONLINE

CHAT IS AVAILABLE M-F 8AM – 4PM

WEBSITE AND CHAT ARE AVAILABLE IN ENGLISH AND SPANISH

STATE-WIDE COVERAGE & RATES – 58 COUNTIES



**CALIFORNIA'S
LOW COST
AUTO INSURANCE**



MyLowCostAuto.com

ANNUAL LIABILITY PREMIUM

	BASE	30%	40%	100%
1	\$244	\$317	\$342	\$488
2	\$263	\$342	\$368	\$526
3	\$263	\$342	\$368	\$526
4	\$317	\$412	\$444	\$634
5	\$483	\$628	\$676	\$966

Base: Drivers with 3+ yrs

30%: Single drivers 19-24 yrs

40%: Drivers less than 3 yrs

100%: Drivers 16-18 yrs

2 Pay Options: Full or Installment

CA DEPT OF INSURANCE COVID UPDATES

APRIL 13, 2020: COMMISSIONER LARA ORDERS INSURANCE COMPANIES TO REFUND PREMIUMS TO DRIVERS AND BUSINESSES AFFECTED BY THE COVID-19

- ORDERS PREMIUM REFUNDS TO POLICY HOLDERS FROM AT LEAST SIX DIFFERENT INSURANCE LINES IN THE FORM OF A PREMIUM CREDIT, PREMIUM REFUND, REDUCTION, OR OTHER APPROPRIATE ADJUSTMENT FOR MARCH – APRIL BY NO LATER THAN AUGUST 2020

APRIL 10, 2020 : COVERAGE FOR DELIVERY DRIVERS FOR CALIFORNIA ESSENTIAL BUSINESSES DURING THE COVID-19 PUBLIC HEALTH

- INSURANCE COMPANIES SHOULD NOT DENY A CLAIM UNDER A PERSONAL AUTO POLICY SOLELY BECAUSE THE DRIVER WAS PROVIDING DELIVERY SERVICE ON BEHALF OF A CALIFORNIA ESSENTIAL BUSINESS

MARCH 18, 2020 : COMMISSIONER LARA CALLS FOR 60-DAY GRACE PERIOD FOR INSURANCE PREMIUM PAYMENTS DUE TO THE DISRUPTION CAUSED BY COVID-19 OUTBREAK

- GIVES INSURED AT LEAST A 60-DAY GRACE PERIOD TO PAY INSURANCE PREMIUMS ON LIFE, HEALTH, AUTO, PROPERTY, CASUALTY, ETC., ENSURING POLICIES ARE NOT CANCELLED FOR NONPAYMENT OF PREMIUM DUE TO COVID-19.

MARCH 18, 2020 : EXPIRED DRIVERS LICENSES, VEHICLE REGISTRATIONS, AND INSURANCE

- INSURERS TO REFRAIN FROM USING THE EXPIRATION OF POLICYHOLDERS' DRIVERS LICENSES OR VEHICLE REGISTRATIONS FOR 60 DAYS FROM MARCH 16, 2020, FOR REASONS TO SECURE/MAINTAIN AUTO INSURANCE COVERAGE, ELIGIBILITY FOR GOOD DRIVER DISCOUNT, CLCA POLICY OR IMPACT RATES TO ANY DRIVER.

APRIL 13, 2020 [LINK TO BULLETIN](#)

APRIL 10, 2020 [LINK TO NOTICE](#)

MARCH 18, 2020 [LINK TO NOTICE1](#) & [NOTICE2](#)

Visit insurance.ca.gov

CA DMV COVID UPDATES



LICENSES FOR DRIVERS YOUNGER THAN 70 THAT EXPIRE BETWEEN MARCH AND MAY 2020 ARE NOW VALID THROUGH MAY 31, 2020 – LAW ENFORCEMENT NOTIFIED AND REQUESTED TO USE DISCRETION



VEHICLE REGISTRATION EXTENDED FOR 60 DAYS FROM MARCH 16, 2020



THE VIRTUAL FIELD OFFICE, [VIRTUAL.DMV.CA.GOV](https://virtual.dmv.ca.gov), BUILDS ON THE OTHER ONLINE SERVICES ALREADY AVAILABLE TO DMV, INCLUDING DRIVER LICENSE RENEWALS.



DMV ONLINE SERVICES STILL AVAILABLE FOR LICENSE/ID RENEWALS, CHANGE OF ADDRESS, REPLACEMENT STICKER CARD, AND MORE – ACCOUNT IS REQUIRED

DMV KIOSKS ARE AVAILABLE FOR VEHICLE REGISTRATION RENEWAL, PLANNED NON-OPERATION, VEHICLE REINSTATEMENT FEE/SUBMISSION OF INSURANCE, DRIVER RECORD, AND VEHICLE RECORD – ACCEPTS CREDIT/DEBIT WITH SMALL FEE

REAL ID enforcement postponed to October 1, 2021
(boarding of domestic flights and entering federal buildings)

Visit dmv.ca.gov



FRESNO COUNTY LIBRARY

Online Services

Jobs & Career

<http://www.fresnolibrary.org/>

EBSCO LearningExpress®
Career Preparation

Career Preparation - LearningExpress

Are you preparing for a professional exam? Are you curious about a particular occupation or looking to improve your workplace skills? Prepare for an occupation exam in social work (ASWB), civil service, law enforcement, teaching (CBEST), and more! Choose the Career Preparation Center and begin your path to a bright future.



DigiBus

Learn computer basics and benefit from job readiness skills specific to Fresno. Resources in 8 subject areas, covering the complete job life cycle.



EBSCO LearningExpress®
Job & Career
Accelerator

Job & Career Accelerator - LearningExpress

Find a career match, explore occupations, search for jobs and internships, and tools to get hired. Browse the career library and college finder.



Job Now

Get online job and career coaching, resume assistance, and interview practice.



Lynda

Lynda.com helps anyone learn software, technology, creative, and business skills to achieve their personal and professional goals. Requires valid library barcode and [PIN](#) to use.





The Library will be answering the following library phone lines in order to create new library cards, troubleshoot issues with existing library accounts, and offer assistance in accessing online resources, including eBooks, audiobooks, research databases and streaming content:

Monday through Friday, 9 a.m. - 12 p.m. and 1 p.m. - 5 p.m.

- ❖ Fig Garden Regional Library: (559) 600-4071
- ❖ Sunnyside Regional Library: (559) 600-6594
- ❖ Woodward Regional Library: (559) 600-3135
- ❖ Betty Rodriguez Regional Library: (559) 600-9245
- ❖ Clovis Regional Library: (559) 600-9531

For assistance with cards and more complicated reference questions, please call:

Central Library at 600-READ (7323)

Monday through Friday, 10 a.m. - 12 p.m. and 1 p.m. - 5 p.m.

Para servicios en Español: (559) 301-6097



WORKFORCE CONNECTION SERVICES

Annette Watkins

Outreach/Workshop Facilitator



This WIOA, Title 1-financially assisted program/service is an equal opportunity employer/program. Auxiliary aids and services are available upon request to people with disabilities and/or limited English

A proud partner of America's Job Center of California™ network.

Adjustments to Workforce Connection COVID-19 Guidelines

Please visit our website to review the full copy of the guidelines:

www.workforce-connection.com

All career counseling and resource room services will be provided telephonically, via email and other technologies.

Hours of operation at Manchester Center **only** are:
8am to 5pm by ***appointment only***

To schedule appointments call **(559) 230-4092**

What Does Workforce Connection Offer?

- **Self-Directed Services-Resource Room**
 - Internet Access
 - Phones to call employers
 - Fax to send out resumes
 - Copy Machine
- **Staff Assisted Services**
- **Training Services**
- **Referrals**

Staff Directed Services

- Career Assessments
- Career Guidance
- [Educational and Training Opportunities](#)
- Job Readiness Workshops
- Job Placement Assistance



Glenn Elizarde

Recruitment Coordinator

Sanctuary Transitional Shelter
Foster Grandparent Program
Sanctuary Youth Shelter
Rural Tobacco Education Program
WIC - Women, Infants and Children
Local Conservation Corps (LCC)
Low-Income Home Energy Assistance Program (LIHEAP)
Café EOC
Street Saints
Housing Programs
Community Health Center
Head Start 0-5
Recycling
Transit Systems
Food Distribution
California Personal Responsibility Education Program (CAPREP)
Summer Food Program
Access Plus Capital
Weatherization
YouthBuild Charter School of California Central
Nielsen Conference Center
School of Unlimited Learning (SOUL)
Adolescent Family Life Program (AFLP)
Food Services
Central Valley Against Human Trafficking (CVAHT)
Safe Place
Urban South Youth Program
LGBTQ+ Resource Center
Valley Association of...



Programs and Services open during 'Shelter in Place'

Sanctuary and Support Services staff is on call and can be reached at (800) 820-4968 or (559) 777-5101.

- Teens can text the word "safe" and current location (address, city, state) to 4HELP (44357) for the nearest Safe Place location

Central Valley Against Human Trafficking (CVAHT) emergency services and remote case management services are available. The phone line remains open: (559) 263-1379.

Fresno EOC WIC sites will continue to issue benefits but only accepting phone appointments. Call (559) 263-1150 to schedule a phone appointment. New clients are welcome! [See the WIC page for more details.](#)

Food Distributions will be available for drive-through and pick-up at these dates and locations only. Please see our [updated plan](#) to continue to provide food while keeping staff and clients safe.

- Parlier Community Center: March 27, April 3, April 17
- Our Lady of Lourdes Mission in Cantua Creek: March 30, April 20

Sanctuary Transitional Shelter
 Foster Grandparent Program
 Sanctuary Youth Shelter
 Rural Tobacco Education Program
 WIC - Women, Infants and Children
 Local Conservation Corps (LCC)
 Low-Income Home Energy Assistance Program (LIHEAP)
 Café EOC
 Street Saints
 Housing Programs
 Community Health Center
 Head Start 0-5
 Recycling
 Transit Systems
 Food Distribution
 California Personal Responsibility Education Program (CAPREP)
 Summer Food Program
 Access Plus Capital
 Weatherization
 YouthBuild Charter School of California Central
 Nielsen Conference Center
 School of Unlimited Learning (SOUL)
 Adolescent Family Life Program (AFLP)
 Food Services
 Central Valley Against Human Trafficking (CVAHT)
 Safe Place
 Urban South Youth Program
 LGBTQ+ Resource Center
 Valley Association of...



Programs and Services open during 'Shelter in Place'

FREE meals for kids ages 1-18
on weekdays starting April 6!



 Fresno Economic Opportunities Commission
Food Services

LOCATIONS AND TIMES

Mental Health Systems
2550 W. Clinton Ave., Fresno, CA
93705
10:05 am – 11:05 am

Manchester Mall (by Sears)
3636 N. Blackstone Ave., Fresno,
CA 93726
11:14 am – 12:14 pm

Franciscan Mobile Estates
2317 S. Chestnut Ave. Fresno, CA
93725
12:58 pm – 1:58 pm

Hacienda Mirabella
2705 S. M.L.K. Blvd. Fresno, CA
93706
2:06 pm - 3:06 pm

Legacy Commons Apartments
2255 S. Plumas St., Fresno, CA
93706
3:10 pm – 4:10 pm

Sanctuary Transitional Shelter

Foster Grandparent Program

Sanctuary Youth Shelter

Rural Tobacco Education Program

WIC - Women, Infants and Children

Local Conservation Corps (LCC)

Low-Income Home Energy Assistance
Program (LIHEAP)

Café EOC

Street Saints

Housing Programs

Community Health Center

Head Start 0-5

Recycling

Transit Systems

Food Distribution

California Personal Responsibility
Education Program (CAPREP)

Summer Food Program

Access Plus Capital

Weatherization

YouthBuild Charter School of California
Central

Nielsen Conference Center

School of Unlimited Learning (SOUL)

Adolescent Family Life Program (AFLP)

Food Services

Central Valley Against Human
Trafficking (CVAHT)

Safe Place

Urban South Youth Program

LGBTQ+ Resource Center

Valley Association of...



**Fresno
Economic
Opportunities
Commission**

Career Opportunities

Loan Processing Analyst

Access Plus Capital
Introductory Full-time

Youth Care Specialist

Sanctuary and Support
Services
Introductory Full-time

Navigator

Sanctuary and Support
Services
Introductory Full-time

Community Outreach Educator

Sanctuary and Support
Services
Introductory Full-time

Community Outreach Specialist

Sanctuary and Support
Services
Introductory Full-time

Driver in Training (Class B)

Transit Systems
Temporary Part-time

Go To <http://www.fresnoeoc.org/> or contact:
Glenn Elizarde glenn.elizarde@fresnoeoc.org

Sanctuary Transitional Shelter

Foster Grandparent Program

Sanctuary Youth Shelter

Rural Tobacco Education Program

WIC - Women, Infants and Children

Local Conservation Corps (LCC)

Low-Income Home Energy Assistance
Program (LIHEAP)

Café EOC

Street Saints

Housing Programs

Community Health Center

Head Start 0-5

Recycling

Transit Systems

Food Distribution

California Personal Responsibility
Education Program (CAPREP)

Summer Food Program

Access Plus Capital

Weatherization

YouthBuild Charter School of California
Central

Nielsen Conference Center

School of Unlimited Learning (SOUL)

Adolescent Family Life Program (AFLP)

Food Services

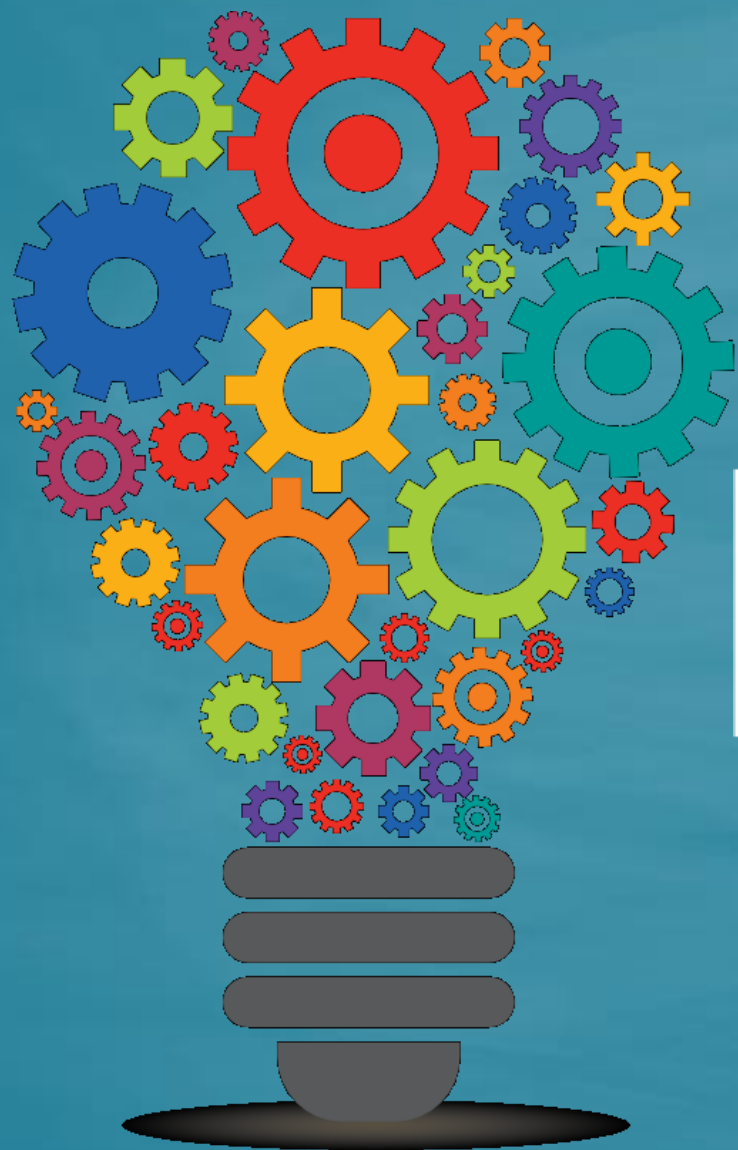
Central Valley Against Human
Trafficking (CVAHT)

Safe Place

Urban South Youth Program

LGBTQ+ Resource Center

Valley Association of...



RESOURCES



JOBS

Company/Organization	Contact Information/Link
Amazon	https://www.amazon.jobs/en-gb/
Aldi	https://careers.aldi.us/
Costco	https://www.costco.com/jobs.html
CVS Health	https://bit.ly/2y2Sa3i
Dollar General	https://careers.dollargeneral.com/
Domino's	https://jobs.dominos.com/dominos-careers/
Express Employment Professionals	(559) 738-7822 Expresspros.com
Papa John's	https://jobs.papajohns.com/
ManPower	Text Manpower at 44844 to apply.
Save Mart	https://www.savemart.com/careers
Walmart	https://careers.walmart.com/

ONWARDCA



DYNAMIC MATCHING SYSTEM

DIRECTORY

COVID-19 RESOURCES

Have you lost your job?

One-stop resource for the people of California impacted
by job loss during the COVID-19 Pandemic



Lose your job?

Click Here to Connect to Resources and Jobs

Translate »

<https://onwardca.org>



DYNAMIC MATCHING SYSTEM

DIRECTORY

COVID-19 RESOURCES



Translate »

How does **OnwardCA** work?

3 Simple Steps to Meet You Where You Are:

STEP 1 • Connect to Essential Life Services
(Money, Food, Shelter, etc.)

STEP 2 • Connect to Retraining Opportunities

STEP 3 • Connect to Your Next Job

Get Started

RESOURCES

City of Fresno

- There will be a 30-day moratorium on shutting off any water or garbage service for lack of payment.
- There is a moratorium in effect through April 18, 2020 for temporary protection from evictions for non-payment of rent. For additional information regarding the moratorium visit www.fresno.gov.

Meal Distribution

- Most school districts are providing sack lunches, please look at your school district's website for time/school sites
- Catholic Charities Monday-Friday 8:30 a.m. -11 a.m. and 1 p.m.-3 p.m. 149 N. Fulton St., Fresno *Must bring ID and Medical Cards of children in the household*
- Grocery Delivery-Bitwise Industries will deliver food to the sick and elderly.
Call 559-460-7809 or email groceries@bitwiseindustries.com They accept cash, check and mobile pay. They will cover the cost of groceries if the individual is using an EBT card.
- Central CA Food Bank –Contact Brenetta Sadakov 559-997-6869
bsadakov@ccfoodbank.org

Lenders

- Contact your mortgage and car loan lenders. Many of them may offer to defer payments if you specifically state that you have been impacted by COVID 19.

RESOURCES

Price Gouging

- It's illegal to raise the price of essential goods, services, and lodging by more than 10 percent after an emergency has been declared. If you suspect a business is price gouging, please call the City Attorney's office at (559) 621-8400.

Taxes

- Tax Deadline has been moved to July 15, 2020

Utilities-PG&E

- Implemented a series of billing and service modifications to support customers who have been impacted by the pandemic:
 - Suspending service disconnections for non-payment and waiving security deposits;
 - Implementing flexible payment plan options; and
 - Providing additional support for low-income and medical baseline customers.
- Go to pge.com/covid19consumerprotections to learn more about our support for customers during these difficult times.

RESOURCES

- Fresno Business Services Center

<http://www.fresnobsc.com/>

- Fresno Economic Development Corporation

<https://www.fresnoedc.com/>

- City of Fresno and/or your local city website

<https://www.fresno.gov/coronavirus/>

- Fresno Unified School District and/or your local school district

<https://www.fresnounified.org/>

THANK YOU!

Martha Espinosa

559.490.7147

mespinosa@workforce-connection.com

mespinosa@wfc.co



This WIOA, Title 1-financially assisted program/service is an equal opportunity employer/program.
Auxiliary aids and services are available upon request to people with disabilities and/or limited English

A proud partner of America's Job Center of California™ network.