

# Fresno Regional Workforce Development Board

## Welcome to the Rapid Response COVID-19-Information for Employees

### INSTRUCTIONS:

- Make sure you are on mute.
- Please use the Chat feature and send a private message to the Host-Martha Espinosa-Kroll providing your:
  1. First and Last Name
  2. email address
  3. Company/Organization you work(ed) for



Fresno Regional WDB  
**Workforce  
Connection**

This WIOA, Title 1-financially assisted program/service is an equal opportunity employer/program.  
Auxiliary aids and services are available upon request to people with disabilities and/or limited English

A proud partner of America's Job Center of California™ network.



# Rapid Response SERVICES

Rapid Response is a proactive business-focused and flexible strategy designed to respond to layoffs and closings by quickly coordinating services to provide immediate aid to companies and their affected workers.



Fresno Regional WDB  
**Workforce  
Connection**

This WIOA, Title 1-financially assisted program/service is an equal opportunity employer/program. Auxiliary aids and services are available upon request to people with disabilities and/or limited English

A proud partner of America's Job Center of California™ network.

# AGENDA



(NAMI)

National Alliance on Mental Illness,  
Christina Valdez-Roup



(EDD)

Employment Development  
Department,  
Karina Blancas



(DSS)

Department of Social Services  
Jose Corchado



Clinica Sierra Vista,  
Andrea Bolanos



(RHA)

Richard Heath and  
Associates,  
May Ly



Workforce Connection,  
Annette Watkins



(EOC)

Economic Opportunities Commission,  
Glenn Elizarde



Resources,  
Martha Espinosa



Fresno Regional WDB  
**Workforce  
Connection**

This WIOA, Title 1-financially assisted program/service is an equal opportunity employer/program.  
Auxiliary aids and services are available upon request to people with disabilities and/or limited English

A proud partner of America's Job Center of California™ network.

FIND HELP, FIND HOPE!



CALL THE NAMI HELPLINE

800-950-6264

OR, IN A CRISIS? TEXT **NAMI** TO **741741**

Further Information Or Support:

<https://namifresno.org/>

NAMI Fresno's HelpLine And Email

Phone: [\(559\) 224-2469](tel:(559)224-2469) (not a crisis line)

Address: 7545 North Del Mar #105, Fresno, CA 93711

Email Address: [info@namifresno.org](mailto:info@namifresno.org)



Fresno County  
Behavioral Health

**WARM Line**  
(559) 600-WARM (9276)

The DBH COVID-19 Warm Line provides non-emergency emotional and coping support to community members. Warm line operators provide supportive listening, practical coping ideas, and information on how to get connected to behavioral health services.

**DBH COVID-19 Warm Line:**

- 559-600-WARM (9276)
- Monday - Friday, 8:00AM to 5:00PM

### For Crisis:

- Emergency - Dial 911
- Suicide Prevention Lifeline 1-800-273-8255
- Fresno County Access Line 1-800-654-3937
- Crisis Text Line 741741



### For other support and assistance:

- NAMI-Fresno Warm-line (559) 224-2469
- Department of Public Health 600-INFO – for general information about COVID-19
- 211 (general resources)
- California Peer Run Warm-Line 1 (855) 845-7415



### Website Resources:

Fresno County Public Health

- [COVID-19 Coronavirus Information](#)
- [Public Health Resources](#)

Fresno County Behavioral Health

- [Behavioral Health Resources](#)
- [fresnocares.org - Suicide Prevention](#)
- [Facebook - Fresno County Behavioral Health](#)



THE COUNTY OF FRESNO  
Department of  
Behavioral Health



**Employment Development  
Department**  
Karina Blancas  
EDD Representative

# EDD

- Job Placement and Referrals
- Unemployment Insurance
- Disability Insurance
- Paid Family Leave
- Employment and Training
- Veteran's Services
- Labor Market Information
- Payroll Taxes
- And More

# Unemployment

Provides income to workers who become unemployed through no fault of their own and other work is not available.

- Your place of employment has closed down due to COVID-19 restrictions
- Reduction in hours or wages
- You are self-employed

## School Closures

- If your child's school is closed, and you have to miss work to be there for them, you may be eligible for Unemployment Insurance benefits. Eligibility considerations include if you have no other care options and if you are unable to continue working your normal hours remotely. File an Unemployment Insurance claim and our EDD representatives will decide if you are eligible.

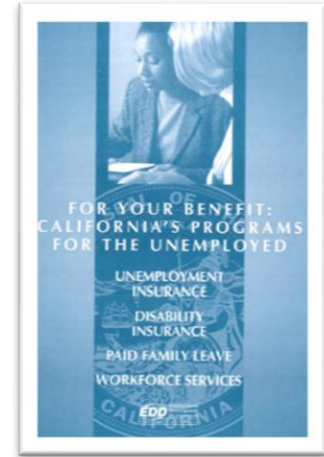
## Self-Employed (Pandemic Unemployment Assistance program)

- If you are self-employed, you may have benefits available from EDD employment insurance programs that you or your employer may have paid into over the past 5 to 18 months. You may have contributions from a prior job, or you could have been misclassified as an independent contractor instead of an employee. Apply for the benefit program that best fits your situation and include details about your employment to help us process your claim.

# Unemployment

## THREE WAYS TO FILE FOR UNEMPLOYMENT

- ✓ **PHONE 1-800-300-5616** Monday-Friday 8 a.m.-12 p.m.
- ✓ **On-line (internet)** <https://www.edd.ca.gov>
- ✓ **Mail or Fax** (*information listed on form*) Call 559-230-4092 to schedule an appointment with Workforce Connection to pick up copies.
  
- **Tutorials**-<https://www.youtube.com/user/CaliforniaEDD/videos>
- **Latest Information** - [https://www.edd.ca.gov/about\\_edd/coronavirus-2019.htm](https://www.edd.ca.gov/about_edd/coronavirus-2019.htm)



## Benefits Booklet

- This book is important to read. It answers most general questions you may have about unemployment. **Information also online.**
- If you file in April they will take all of last years wages and from those 12 months, they take the highest quarter to determine your weekly benefit amount which begins on.  
**Federal Pandemic Unemployment Compensation, payable for any week that is equal to:**
  - **The amount determined under the State law, plus**
  - **An additional amount of \$600 (for 4 months only)**
- There is a one week waiting period. **(This has been suspended)**
- Maximum weeks to collect unemployment is 26 weeks, which is equal to 6 months.
- There are no federal extensions at this time.  
**(Federal Government will fund an additional 13 weeks; The total number of weeks for which a covered individual may receive assistance cannot exceed 39 weeks. )**

# Cal Jobs

If you file a claim, you are required to register and create a resume on Cal-JOBS. <https://www.caljobs.ca.gov/>

## **California Training Benefits**

- If you feel you need to return to school to upgrade your skills, you need to read this pamphlet.
- You need to make sure you inquire about CTB by the 16<sup>th</sup> week of collecting unemployment, otherwise you will be ineligible.

# Disability

Provides short-term, partial wage replacement benefits to workers who are unable to work due to a non-work related illness or injury, pregnancy or Childbirth.

## **WAYS TO FILE:**

**Online:** [www.edd.ca.gov/disability](http://www.edd.ca.gov/disability)

1-800-480-3287

## **Sick or Quarantined**

If you're unable to work due to having or being exposed to COVID-19 (certified by a medical professional), you can [file a Disability Insurance \(DI\) claim](#). DI provides short-term benefit payments to eligible workers who have a full or partial loss of wages due to a non-work-related illness, injury, or pregnancy. Benefit amounts are approximately 60-70 percent of wages (depending on income) and range from \$50-\$1,300 a week.

Telehealth and virtual appointments are acceptable for a physical examination, but medical certifications are still required.

The [Governor's Executive Order](#) waives the one-week unpaid waiting period, so you can collect DI benefits for the first week you are out of work. If you are eligible, the EDD processes and issues payments within a few weeks of receiving a claim.

# Paid Family Leave

- Partial wage replacement benefits to individuals who need to take time off work to care for a seriously ill child, parent, parent in law, grandparent, grandchild, sibling, spouse or registered domestic partner. Benefits are also available to parents who need time to bond with a new entering their family either by birth, adoption, or foster care placement
- There is no waiting period.

## WAYS TO FILE:

**Online:** [https://www.edd.ca.gov/disability/SDI\\_Online.htm](https://www.edd.ca.gov/disability/SDI_Online.htm)

For more information go to:

[www.edd.ca.gov/disability/paid\\_family\\_leave.htm](http://www.edd.ca.gov/disability/paid_family_leave.htm)

Call Monday-Friday 8 a.m.-5 p.m. 1-877-238-4373

**Mail:** You can obtain a paper *Claim for Paid Family Leave (PFL) Benefits* (DE 2501F) form a few different ways:

- Visit Online Forms and Publications <https://forms.edd.ca.gov/forms> and order a form online. A form will be mailed to you.
- Obtain the form from your physician/practitioner or employer.
- Visit an [SDI Office](#).

## Caregiving

- If you're unable to work because you are caring for an ill or quarantined family member with COVID-19 (certified by a medical professional), you can [file a Paid Family Leave \(PFL\) claim](#). PFL provides up to six weeks of benefit payments to eligible workers who have a full or partial loss of wages because they need time off work to care for a seriously ill family member or to bond with a new child. Benefit amounts are approximately 60-70 percent of wages (depending on income) and range from \$50-\$1,300 a week. If you are eligible, the EDD processes and issues payments within a few weeks of receiving a claim.
- Telehealth and virtual appointments are acceptable for a physical examination, but medical certifications are still required.



# Veteran Resources

We do have Veterans representatives here at our offices. We are directed to give them the main switchboard number 230-4158. We're proud to provide priority services to all veterans, and to help you and your eligible spouse find jobs and maximize your employment and training opportunities. Our veteran representatives specialize in helping you return to work and offer the following services:

- ❖ A 24-hour priority hold on all job listings just for veterans
- ❖ Customized job search assistance
- ❖ Job fairs and workshops
- ❖ Employer recruitments
- ❖ Other events and resources

[https://www.edd.ca.gov/jobs\\_and\\_training/services\\_for\\_veterans.htm](https://www.edd.ca.gov/jobs_and_training/services_for_veterans.htm)



**DEPARTMENT OF SOCIAL SERVICES**  
**JOSE CORCHADO**

# DSS Lobby Closures Effective 4/1/20

- For questions regarding your Cal Fresh, Medi-Cal or CalWORKs case you can contact the Call Center Monday - Friday 7:30am to 4:30pm at 1-855-832-8082
- Apply for benefits [www.mybenefitscalwin.org](http://www.mybenefitscalwin.org)
- Report Child Abuse or Neglect – 24 Hour Hotline 600-8320
- Report Elder/Dependent Adult Abuse- 24 Hour Hotline 600-3383 or (800) 418-1426

## Public Assistance

- **OPEN FOR SELF SERVICES & EMERGENCY SERVICES – FRESNO METRO & REGIONAL OFFICES**
  - Heritage- 3151 N. Millbrook- Self Service and Scheduled EBT/Emergency BIC
  - Main- 4455 E. Kings Canyon Rd- [Self Service and Scheduled EBT/Emergency BIC](#)
  - "E" Street - 1209 "E" Street (SOFT CLOSE –General Relief Clients with No Address or Phone)
  - Selma- 3800 N. McCall Ave- Self Service and Scheduled EBT/Emergency BIC
  - Reedley-1680 E. Manning Ave- Self Service and Scheduled EBT/Emergency BIC
  - Coalinga- 311 Coalinga Plaza- Self Service and Scheduled EBT/Emergency BIC
  - Kerman- 15180 W. Whitesbridge Ave-Self Service and Scheduled EBT/Emergency BIC

## • **OPEN FOR LIMITED SERVICES**

- Fairgrounds - 4468 E. Kings Canyon Rd – **DROP BOX ONLY**
- Barton- 4499 E. Kings Canyon Rd- Homeless/General Relief clients with NO phone access for State Hearing Purposes Only

## • **CLOSED TO THE PUBLIC**

- West Fresno, Sunnyside, Senior Resource Center, Commissary 1st and 2nd and Huntington Hall – **CLOSED**

## Child Welfare

## • **OPEN FOR LIMITED SERVICES**

- "L" Street - 1404 "L" Street– **Services requiring in person contact**
- Taft- 3688 E. Shields Ave – **Limited Services to Foster Youth**

## • **CLOSED TO THE PUBLIC**

- West Fresno Regional Center, Center Mall Court, Fulton and Gallery Plaza – **CLOSED**

## Fresno County Department of Social Services resource information

- Contact MAP Point (559) 512-6777 to find emergency shelter space currently available. DSS continues to work with partner agencies to bring more facilities online.
- DSS online and call center are a convenient and secure way to apply for program services, maintain eligibility and seek answers to your questions. Online Resources:

## • **Apply for Benefits at [www.mybenefitscalwin.org](http://www.mybenefitscalwin.org)**

- Benefit programs: CalFresh, Medi-Cal, CalWORKs, and General Relief
- You will be contacted by telephone and mail to inform you of the date and time of your telephone interview.
- **Personal Access to Social Services (P.A.S.S.)** – Visit [DSSPASS.fresnocountyca.gov](http://DSSPASS.fresnocountyca.gov)
  - Access Case Information
  - Download Grant Verifications (WHIS reports)
  - Upload Documents and verifications

## • **Need to reschedule your appointment or missed your appointment?** Call: 1-855-832-8082

- Hours of operations: Monday through Friday from 7:30 a.m. - 4:30 p.m.

## • **Request a new Medi-Cal BIC card** by calling 1-877-600-1377 and follow the prompts

- Available 24 hours a day

## • **Request a replacement EBT card** by calling 1-877-328-9677

- Available 24 hours a day
- You will never be asked for your PIN Number

## • **24/7 Automated System:** 1-877-600-1377

- Case and Benefit Information

# CalFresh (Food Stamps)

Provides low-income households with monthly benefits

Supplements households income for the purchase of food items

Who can get CalFresh:

- Families
- Single Adults
- Unemployed / Employed
- Elderly or disabled
- Homeless
- College students
  - Working 20 hours per week

# CalWORKs

(Cash aid - families with children)

Automated information about your Cash, Food, or Medi-Cal case:

Access your case online at:

<https://www.mybenefitscalwin.org/>

If you need to speak to a worker,  
1-855-832-8082

between 7:30 am-4:30 pm

Any worker who answers the phone will be  
able to assist you

# MEDI-CAL

Medi-Cal is California's public health insurance program, patterned after the Federal Medicaid program, designed to provide no-cost or low-cost medical benefits to low income individuals and families. Enrollment for Medi-Cal coverage is open all year.

## Who May Be Eligible For Medi-Cal

- Children under the age of 21
- Pregnant individuals
- Low income families
- Adults without children, 19 to 64 years of age
- Individuals over 65 years of age
- Individuals with disabilities
- Financial Eligibility
- To be eligible for no cost Medi-Cal, a single adult individual must have an annual income lower than 138 percent of the federal poverty level. For families the income limit may be higher, as it depends on number of individuals in the household. Those exceeding income limits may qualify for low cost health insurance plans through Covered California.
- For certain Medi-Cal programs along with income limits, property limits may apply to all applicants except pregnant individuals and children ages 0 to 18.
- For more information or to apply online, please visit [My Benefits CalWIN](#) or [Covered California](#).

# Benefits CalWIN

([www.mybenefitscalwin.org](http://www.mybenefitscalwin.org))

- Online website for clients to apply for Fresno County public assistance programs, including CalWORKs (cash aid), CalFresh (food stamps), and Medi-Cal
- Clients can apply for services 24/7 without having to come into a DSS office.
- Other online services available include: view benefit amount and program status, complete reports, request a Medi-Cal replacement card, request forms.

## What is Covered CA

Covered California is a free service that connects Californians with brand-name health insurance under the Patient Protection and Affordable Care Act. It's the only place where you can get financial help when you buy health insurance from well-known companies. That means when you apply, you may qualify for a discount on a health plan through Covered California, or get health insurance through the state's Medi-Cal program. Either way, you'll have great health coverage.



**COVERED  
CALIFORNIA**

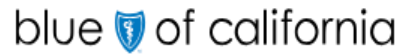
# Federal Poverty Level

Household Size	% FPL	0%	100%	138%	150%	200%	213%	250%	266%	300%	322%	400%	600%
	1		\$0	\$12,490	\$17,237	\$18,735	\$24,980	\$26,604	\$31,225	\$33,224	\$37,470	\$40,218	\$49,960
2		\$0	\$16,910	\$23,336	\$25,365	\$33,820	\$36,019	\$42,275	\$44,981	\$50,730	\$54,451	\$67,640	\$101,460
3		\$0	\$21,330	\$29,436	\$31,995	\$42,660	\$45,433	\$53,325	\$56,738	\$63,990	\$68,683	\$85,320	\$127,980
4		\$0	\$25,750	\$35,535	\$38,625	\$51,500	\$54,848	\$64,375	\$68,495	\$77,250	\$82,915	\$103,000	\$154,500
5		\$0	\$30,170	\$41,635	\$45,255	\$60,340	\$64,263	\$75,425	\$80,253	\$90,510	\$97,148	\$120,680	\$181,020
6		\$0	\$34,590	\$47,735	\$51,885	\$69,180	\$73,677	\$86,475	\$92,010	\$103,770	\$111,380	\$138,360	\$207,540
7		\$0	\$39,010	\$53,834	\$58,515	\$78,020	\$83,092	\$97,525	\$103,767	\$117,030	\$125,613	\$156,040	\$234,060
8		\$0	\$43,430	\$59,934	\$65,145	\$86,860	\$92,506	\$108,575	\$115,524	\$130,290	\$139,845	\$173,720	\$260,580
add'l add		\$0	\$4,420	\$6,100	\$6,630	\$8,840	\$9,415	\$11,050	\$11,758	\$13,260	\$14,233	\$17,680	\$26,520

	Medi-Cal for Adults	Medi-Cal for Pregnant Women	Medi-Cal Access Program (for Pregnant Women)
	Medi-Cal for Kids (0-18 Yrs.)		County Children's Health Initiative Program

**Note:** Most consumers up to 138% FPL will be eligible for Medi-Cal. If ineligible for Medi-Cal, consumers may qualify for a Covered California health plan with financial help including: federal tax credit, California state subsidy, Enhanced Silver plans and AIAN plans.



# Sliding Fee Scale at Clinica Sierra Vista

The discount program is for patients without health insurance or basic health coverage who cannot afford the cost of their medical or dental consultation. You may be eligible for Clinica Sierra Vista's discount program. The discount is based on family size and household income.

- Covers Medical and Dental services\*, and specialty services\*

\*cost varies

Family Size	Gross Household Monthly Income									
	0% - 100%	101% - 133%	134% - 166%	167% - 200%	201%+					
1	0 - 1012	1,013 - 1,346	1,347 - 1679	1680 - 2023	2024					
2	0 - 1372	1,373 - 1,824	1,825 - 2277	2278 - 2743	2744					
3	0 - 1732	1,733 - 2,303	2,304 - 2875	2876 - 3463	3464					
4	0 - 2092	2,093 - 2,782	2,783 - 3472	3473 - 4183	4184					
5	0 - 2452	2,453 - 3,261	3,262 - 4070	4071 - 4903	4904					
6	0 - 2812	2,813 - 3,740	3,741 - 4667	4668 - 5623	5624					
7	0 - 3172	3,173 - 4,218	4,219 - 5265	5266 - 6343	6344					
8	0 - 3532	3,533 - 4,697	4,698 - 5863	5864 - 7063	7064					
9	0 - 3892	3,893 - 5,176	5,177 - 6460	6461 - 7783	7784					
10	0 - 4252	4,253 - 5,655	5,656 - 7058	7059 - 8503	8504					
11	0 - 4612	4,613 - 6,134	6,135 - 7655	7656 - 9223	9224					
12	0 - 4972	4,973 - 6,612	6,613 - 8253	8254 - 9943	9944					
13	0 - 5332	5,333 - 7,091	7,092 - 8851	8852 - 10663	10664					
14	0 - 5692	5,693 - 7,570	7,571 - 9448	9449 - 11383	11384					
15	0 - 6052	6,053 - 8,049	8,050 - 10046	10047 - 12103	12104					

FCL/Category	610/A			625/B			650/C		675/D	699/SP
--------------	-------	--	--	-------	--	--	-------	--	-------	--------

Fees	Nominal Fee									100% of charges
	\$10.00			\$20.00			\$30.00		\$40.00	

Category	Medical	Dental
A	\$10	\$40
B	\$20	50%
C	\$30	75%
D	\$40	75%

# Clinica Sierra Vista

## **Clinica Sierra Vista offers the following programs:**

- Family Medicine
- Behavioral Health Services
- Internal Medicine
- Comprehensive Health Services
- Pediatrics
- Comprehensive Prenatal Specialty Services
- OBGYN
- Health Insurance Assistance Services
- Podology
- Nutrition Program WIC
- Vaccinations

# Clinica Sierra Vista Medical Centers

## **Elm Walk-In Clinic**

**2740 S. Elm Avenue  
Fresno, CA 93706**

*Monday - Sunday, 8:00 am – 8:00 pm*

## **Elm Family Community Health Center**

**2740 S. Elm Avenue  
Fresno, CA 93706  
559-457-5200**

*Monday - Saturday, 8:00 am – 7:00 pm*

## **Elm Women's & Pediatric Community Health Center**

**2760 S. Elm Avenue  
Fresno, CA 93706  
559-457-5300**

*Monday - Friday, 8:00 am – 7:00 pm*

## **Garland Community Health Center**

**3727 N. First Street, Suite 106  
Fresno, CA 93726  
559-457-6900**

*Monday - Friday, 8:00 am – 5:00 pm*

## **Gaston Health and Wellness Center**

**1120 E. Church Avenue  
Fresno, CA 93706  
559-457-6700**

*Monday - Friday, 7:30 am – 4:00 pm*

## **North Fine Community Health Center**

**1945 N. Fine Avenue, Suite 100  
Fresno, CA 93727  
559-457-5650**

*Monday - Friday, 8:00 am – 5:00 pm*

## **Orange & Butler Community Health Center**

**1350 S. Orange Avenue  
Fresno, CA 93702  
559-457-5400**

*Monday - Friday, 8:00 am – 5:00 pm*

## **RMC Community Health Center**

**2505 E. Divisadero Street  
Fresno, CA 93721  
559-457-5500**

*Monday - Saturday, 8:00 am – 5:00 pm*

## **West Fresno Community Health Center**

**302 Fresno Street, Suite 101  
Fresno, CA 93706  
559-457-5700**

*Monday - Friday, 8:00 am – 5:00 pm*

## **West Shaw Community Health Center**

**3645 W Shaw Avenue, Suite 101  
Fresno, CA 93711  
559-457-6800**

*Monday - Friday, 8:30 am - 5:30 pm*

# Dental Offices and Behavioral Health

## Dental Centers

### **Dental Center - Elm**

**2756 S. Elm Avenue**

**Fresno, CA 93706**

**559-457-5345**

*Monday - Saturday, 8:00 am – 7:00 pm*

### **Dental Center - West Fresno**

**302 Fresno Street, Suite 204**

**Fresno, CA 93706**

**559-457-5780**

*Monday - Friday, 8:00 am – 5:00 pm*

## *Behavioral Health Services in the following Health Centers*

### **Community Resource Center**

**1305 E. Divisadero Avenue**

**559-457-5960**

### **Elm Family Community Health Center**

**2740 S. Elm Avenue**

### **Centro de Salud - Gaston**

**1120 E. Church Avenue**

### **Centro de Salud - North Fine**

**1945 N. Fine Avenue, Suite 100**

### **Centro de Salud - Orange & Butler**

**1350 S. Orange Avenue**

### **Centro de Salud - West Shaw**

**3451 W. Shaw Avenue, Suite 102**

## **SPECIALTY BEHAVIORAL HEALTH SERVICES**

### **North Fine - Adultos**

**2002 N. Fine Avenue, Suite 100**

**559-457-6975**

### **North Fine - Niños**

**2010 N. Fine Avenue, Suite 105**

**559-457-6976**

### **West Fresno - Adultos y Niños**

**302 Fresno Street, Suite 106**

**559-457-5750**

### **West Shaw - Adultos**

**3451 W. Shaw Avenue, Suite**

**101**

### **West Shaw - Niños**

**3451 W. Shaw Avenue, Suite**

**102**

For a medical appointment please call:

**1-833-278-4584**

For questions about Health Insurance

Eligibility please call

**1-855-867-7216**





# RICHARD HEATH AND ASSOCIATES

May Ly

Program Specialist, CLCA



This WIOA, Title 1-financially assisted program/service is an equal opportunity employer/program.  
Auxiliary aids and services are available upon request to people with disabilities and/or limited English



# CALIFORNIA'S LOW COST AUTO (CLCA)

BY: MAY LY, PROGRAM SPECIALIST NORTHERN CALIFORNIA

*March 2020*



# CALIFORNIA'S LOW COST AUTO PROGRAM

- CA LOW COST AUTO IS A STATE-SPONSORED PROGRAM, PASSED BY THE CA LEGISLATURE AND MANAGED BY THE CA DEPARTMENT OF INSURANCE.
- CLCA PROVIDES AFFORDABLE, LOW COST LIABILITY INSURANCE TO ELIGIBLE CALIFORNIA DRIVERS WHO MEET INCOME AND ELIGIBILITY GUIDELINES
- BENEFITS NOT JUST LOW-INCOME DRIVERS, MANY MIDDLE-CLASS HOUSEHOLDS MAY QUALIFY.
- APPLY ON-LINE AT: [MYLOWCOSTAUTO.COM](https://mylowcostauto.com)
  - CHAT FEATURE AVAILABLE FOR ASSISTANCE
  - WEBSITE AVAILABILITY IN SPANISH

# ELIGIBILITY AND RATES



Household Size	Annual Income 250% of FPL
1	\$31,900
2	\$43,100
3	\$54,300
4	\$65,500
5	\$76,700
6	\$87,900

**Zone 1 Counties:** Fresno, Kings, Madera, Monterey, San Benito, San Luis Obispo, Santa Barbara, Santa Cruz, and Tulare

<b>Base Rate</b> \$244
<b>Unmarried 19-24 Years</b> \$317
<b>Less Than 3 Years</b> \$342
<b>Drivers 16-18 Years</b> \$488

**Eligibility Guidelines:**

- **Applicants must have a valid CA Driver's License**
- **Have a vehicle valued at \$25,000 or less**
- **Meet Income Guidelines**
- **Be at least 16**

CLCA offers two payment options: *Payment in full OR 20% down with 7 installment payments (Installment fee of \$4.00 applies)*



**FRESNO COUNTY LIBRARY**

# Online Services

## Jobs & Career

<http://www.fresnolibrary.org/>

EBSCO LearningExpress®  
Career Preparation

### Career Preparation - LearningExpress

Are you preparing for a professional exam? Are you curious about a particular occupation or looking to improve your workplace skills? Prepare for an occupation exam in social work (ASWB), civil service, law enforcement, teaching (CBEST), and more! Choose the Career Preparation Center and begin your path to a bright future.



### DigiBus

Learn computer basics and benefit from job readiness skills specific to Fresno. Resources in 8 subject areas, covering the complete job life cycle.



EBSCO LearningExpress®  
Job & Career Accelerator

### Job & Career Accelerator - LearningExpress

Find a career match, explore occupations, search for jobs and internships, and tools to get hired. Browse the career library and college finder.



### Job Now

Get online job and career coaching, resume assistance, and interview practice.



### Lynda

Lynda.com helps anyone learn software, technology, creative, and business skills to achieve their personal and professional goals. Requires valid library barcode and PIN to use.





**The Library will be answering the following library phone lines in order to create new library cards, troubleshoot issues with existing library accounts, and offer assistance in accessing online resources, including eBooks, audiobooks, research databases and streaming content:**

**Monday through Friday, 9 a.m. - 12 p.m. and 1 p.m. - 5 p.m.**

- ❖ Fig Garden Regional Library: (559) 600-4071
- ❖ Sunnyside Regional Library: (559) 600-6594
- ❖ Woodward Regional Library: (559) 600-3135
- ❖ Betty Rodriguez Regional Library: (559) 600-9245
- ❖ Clovis Regional Library: (559) 600-9531

**For assistance with cards and more complicated reference questions, please call:**

**Central Library at 600-READ (7323)**

**Monday through Friday, 10 a.m. - 12 p.m. and 1 p.m. - 5 p.m.**

**Para servicios en Español: (559) 301-6097**



# WORKFORCE CONNECTION SERVICES

Annette Watkins

Outreach/Workshop Facilitator



This WIOA, Title 1-financially assisted program/service is an equal opportunity employer/program. Auxiliary aids and services are available upon request to people with disabilities and/or limited English

# Adjustments to Workforce Connection COVID-19 Guidelines

Please visit our website to review the full copy of the guidelines:

[www.workforce-connection.com](http://www.workforce-connection.com)

All career counseling and resource room services will be provided telephonically, via email and other technologies.

Hours of operation at Manchester Center **only** are:  
8am to 5pm by **appointment only**

To schedule appointments call **(559) 230-4092**



This WIOA, Title 1-financially assisted program/service is an equal opportunity employer/program. Auxiliary aids and services are available upon request to people with disabilities and/or limited English

# What Does Workforce Connection Offer?

- **Self-Directed Services-Resource Room**
  - Internet Access
  - Phones to call employers
  - Fax to send out resumes
  - Copy Machine
- **Staff Assisted Services**
- **Training Services**
- **Referrals**

# Staff Directed Services

- Career Assessments
- Career Guidance
- [Educational and Training Opportunities](#)
- Job Readiness Workshops
- Job Placement Assistance



Fresno  
**Economic  
Opportunities  
Commission**

# Glenn Elizarde

## Recruitment Coordinator

Sanctuary Transitional Shelter  
Foster Grandparent Program  
Sanctuary Youth Shelter  
Rural Tobacco Education Program  
WIC - Women, Infants and Children  
Local Conservation Corps (LCC)  
Low-Income Home Energy Assistance Program (LIHEAP)  
Café EOC  
Street Saints  
Housing Programs  
Community Health Center  
Head Start 0-5  
Recycling  
Transit Systems  
Food Distribution  
California Personal Responsibility Education Program (CAPREP)  
Summer Food Program  
Access Plus Capital  
Weatherization  
YouthBuild Charter School of California Central  
Nielsen Conference Center  
School of Unlimited Learning (SOUL)  
Adolescent Family Life Program (AFLP)  
Food Services  
Central Valley Against Human Trafficking (CVAHT)  
Safe Place  
Urban South Youth Program  
LGBTQ+ Resource Center  
Valley Association of...



## Programs and Services open during ‘Shelter in Place’

**Sanctuary and Support Services** staff is on call and can be reached at (800) 820-4968 or (559) 777-5101.

- Teens can text the word “safe” and current location (address, city, state) to 4HELP (44357) for the nearest Safe Place location

**Central Valley Against Human Trafficking (CVAHT)** emergency services and remote case management services are available. The phone line remains open: (559) 263-1379.

**Fresno EOC WIC sites** will continue to issue benefits but only accepting phone appointments. Call (559) 263-1150 to schedule a phone appointment. New clients are welcome! [See the WIC page for more details.](#)

**Food Distributions** will be available for drive-through and pick-up at these dates and locations only. Please see our [updated plan](#) to continue to provide food while keeping staff and clients safe.

- Parlier Community Center: March 27, April 3, April 17
- Our Lady of Lourdes Mission in Cantua Creek: March 30, April 20

Sanctuary Transitional Shelter  
Foster Grandparent Program  
Sanctuary Youth Shelter  
Rural Tobacco Education Program  
WIC - Women, Infants and Children  
Local Conservation Corps (LCC)  
Low-Income Home Energy Assistance Program (LIHEAP)  
Café EOC  
Street Saints  
Housing Programs  
Community Health Center  
Head Start 0-5  
Recycling  
Transit Systems  
Food Distribution  
California Personal Responsibility Education Program (CAPREP)  
Summer Food Program  
Access Plus Capital  
Weatherization  
YouthBuild Charter School of California Central  
Nielsen Conference Center  
School of Unlimited Learning (SOUL)  
Adolescent Family Life Program (AFLP)  
Food Services  
Central Valley Against Human Trafficking (CVAHT)  
Safe Place  
Urban South Youth Program  
LGBTQ+ Resource Center  
Valley Association of...



## Programs and Services open during 'Shelter in Place'

**FREE meals for kids ages 1-18**  
on weekdays starting April 6!



Fresno Economic Opportunities Commission  
Food Services

### LOCATIONS AND TIMES

Mental Health Systems  
2550 W. Clinton Ave., Fresno, CA  
93705  
10:05 am – 11:05 am

Manchester Mall (by Sears)  
3636 N. Blackstone Ave., Fresno,  
CA 93726  
11:14 am – 12:14 pm

Franciscan Mobile Estates  
2317 S. Chestnut Ave. Fresno, CA  
93725  
12:58 pm – 1:58 pm

Hacienda Mirabella  
2705 S. M.L.K. Blvd. Fresno, CA  
93706  
2:06 pm - 3:06 pm

Legacy Commons Apartments  
2255 S. Plumas St., Fresno, CA  
93706  
3:10 pm – 4:10 pm

Sanctuary Transitional Shelter  
Foster Grandparent Program  
Sanctuary Youth Shelter  
Rural Tobacco Education Program  
WIC - Women, Infants and Children  
Local Conservation Corps (LCC)  
Low-Income Home Energy Assistance  
Program (LIHEAP)

Café EOC

Street Saints

Housing Programs

Community Health Center

Head Start 0-5

Recycling

Transit Systems

Food Distribution

California Personal Responsibility  
Education Program (CAPREP)

Summer Food Program

Access Plus Capital

Weatherization

YouthBuild Charter School of California  
Central

Nielsen Conference Center

School of Unlimited Learning (SOUL)

Adolescent Family Life Program (AFLP)

Food Services

Central Valley Against Human  
Trafficking (CVAHT)

Safe Place

Urban South Youth Program

LGBTQ+ Resource Center

Valley Against Human Trafficking



**Fresno  
Economic  
Opportunities  
Commission**

## Career Opportunities

### **Loan Processing Analyst**

Access Plus Capital  
Introductory Full-time

**Youth Care Specialist**  
Sanctuary and Support  
Services  
Introductory Full-time

**Navigator**  
Sanctuary and Support  
Services  
Introductory Full-time

### **Community Outreach Educator**

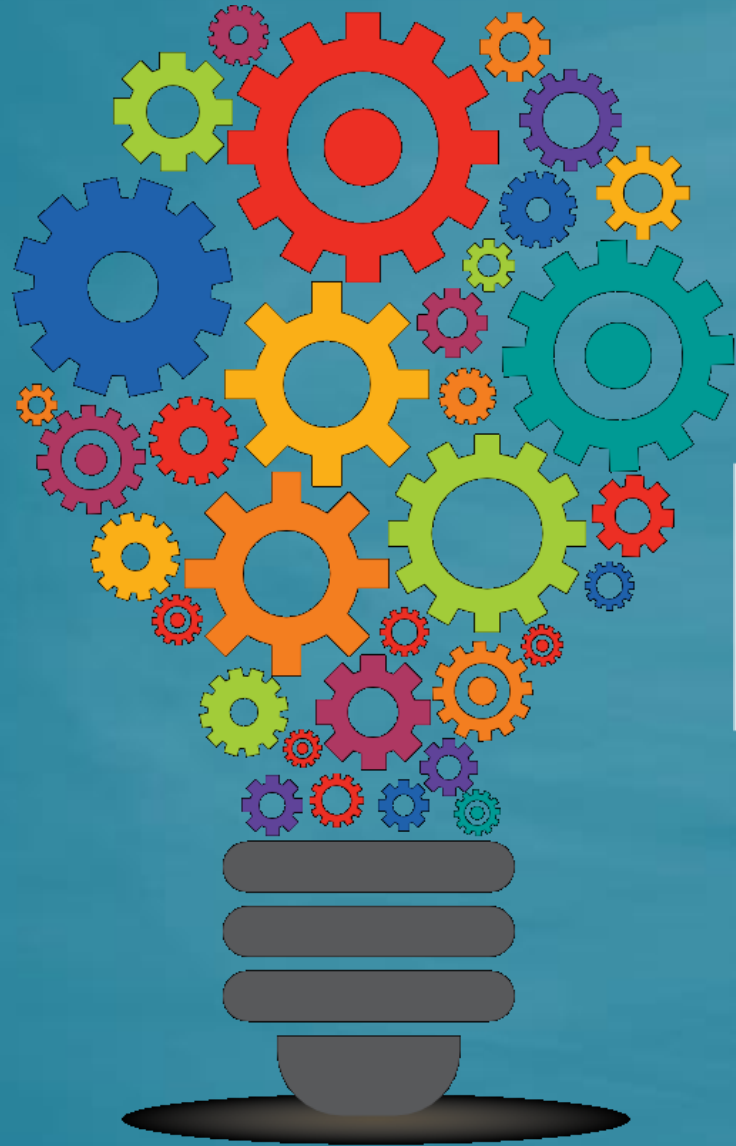
Sanctuary and Support  
Services  
Introductory Full-time

**Community Outreach  
Specialist**  
Sanctuary and Support  
Services  
Introductory Full-time

**Driver in Training  
(Class B)**  
Transit Systems  
Temporary Part-time

Go To <http://www.fresnoeoc.org/> or contact:  
Glenn Elizarde [glenn.elizarde@fresnoeoc.org](mailto:glenn.elizarde@fresnoeoc.org)

- Sanctuary Transitional Shelter
- Foster Grandparent Program
- Sanctuary Youth Shelter
- Rural Tobacco Education Program
- WIC - Women, Infants and Children
- Local Conservation Corps (LCC)
- Low-Income Home Energy Assistance Program (LIHEAP)
- Café EOC
- Street Saints
- Housing Programs
- Community Health Center
- Head Start 0-5
- Recycling
- Transit Systems
- Food Distribution
- California Personal Responsibility Education Program (CAPREP)
- Summer Food Program
- Access Plus Capital
- Weatherization
- YouthBuild Charter School of California Central
- Nielsen Conference Center
- School of Unlimited Learning (SOUL)
- Adolescent Family Life Program (AFLP)
- Food Services
- Central Valley Against Human Trafficking (CVAHT)
- Safe Place
- Urban South Youth Program
- LGBTQ+ Resource Center
- Valley Association of...



RESOURCES



# JOBS

Company/Organization	Contact Information/Link
Amazon	<a href="https://www.amazon.jobs/en-gb/">https://www.amazon.jobs/en-gb/</a>
Aldi	<a href="https://careers.aldi.us/">https://careers.aldi.us/</a>
Costco	<a href="https://www.costco.com/jobs.html">https://www.costco.com/jobs.html</a>
CVS Health-Here	<a href="https://bit.ly/2y2Sa3i">https://bit.ly/2y2Sa3i</a>
Dollar General	<a href="https://careers.dollargeneral.com/">https://careers.dollargeneral.com/</a>
Domino's	<a href="https://jobs.dominos.com/dominos-careers/">https://jobs.dominos.com/dominos-careers/</a>
Papa John's	<a href="https://jobs.papajohns.com/">https://jobs.papajohns.com/</a>
ManPower	Text Manpower at 44844 to apply.
Save Mart	<a href="https://www.savemart.com/careers">https://www.savemart.com/careers</a>
Walmart	<a href="https://careers.walmart.com/">https://careers.walmart.com/</a>

# ONWARDCA

## Have you lost your job?

One-stop resource for the people of California impacted by job loss during the COVID-19 Pandemic



Lose your job?

Click Here to Connect to Resources and Jobs

Translate »

<https://onwardca.org>



Translate »

## How does OnwardCA work?

3 Simple Steps to Meet You Where You Are:

STEP 1 • Connect to Essential Life Services  
(Money, Food, Shelter, etc.)

STEP 2 • Connect to Retraining Opportunities

STEP 3 • Connect to Your Next Job

Get Started

# RESOURCES

- **City of Fresno-** There will be a 30-day moratorium on shutting off any water or garbage service for lack of payment.
- **Meal Distribution-**
  - Most school districts are providing sack lunches, please look at your school district's website for time/school sites
  - Catholic Charities Monday-Friday 8:30 a.m. -11 a.m. and 1 p.m.-3 p.m. 149 N. Fulton St., Fresno *Must bring ID and Medical Cards of children in the household*
  - Grocery Delivery-Bitwise Industries will deliver food to the sick and elderly. Call 559-460-7809 or email [groceries@bitwiseindustries.com](mailto:groceries@bitwiseindustries.com) They accept cash, check and mobile pay. They will cover the cost of groceries if the individual is using an EBT card.
- **Lenders-**Contact your mortgage and car loan lenders. Many of them may offer to defer payments if you specifically state that you have been impacted by COVID 19.
- **Price Gouging-**It's illegal to raise the price of essential goods, services, and lodging by more than 10 percent after an emergency has been declared. If you suspect a business is price gouging, please call the City Attorney's office at [\(559\) 621-8400](tel:5596218400).
- **Taxes-**Tax Deadline has been moved to July 15, 2020

# RESOURCES

➤ **Utilities-PG&E** Implemented a series of billing and service modifications to support customers who have been impacted by the pandemic:

- Suspending service disconnections for non-payment and waiving security deposits;
- Implementing flexible payment plan options; and
- Providing additional support for low-income and medical baseline customers.

Go to [pge.com/covid19consumerprotections](https://pge.com/covid19consumerprotections) to learn more about our support for customers during these difficult times.

Customers are advised to be aware of scammers taking advantage of the current situation with calls and emails threatening to shut off power if a payment is not made. Anyone who has received such a call can report it immediately by calling PG&E at [1-800-743-5000](tel:1-800-743-5000) or visit [pge.com/scams](https://pge.com/scams).

# RESOURCES

- Fresno Business Services

<http://www.fresnobsc.com/>

- Fresno Economic Development Corporation

<https://www.fresnoedc.com/>

- City of Fresno and/or your local city website

<https://www.fresno.gov/coronavirus/>

- Fresno Unified School District and/or your local school district

<https://www.fresnounified.org/>

# ADDITIONAL WEBINARS

## April 6th-April 10th

### RESUMÉ WORKSHOP NOW AVAILABLE

“Resumé Writing 101:

Foundation Skills to Build a Dynamic Resumé”

THURSDAY, APRIL 9TH 1-5 P.M.

*NO COST | REGISTRATION REQUIRED*

Join URL: <https://tinyurl.com/Resume040920>

HOSTED BY: STATE CENTER COMMUNITY COLLEGE DISTRICT'S  
TRAINING INSTITUTE

<http://www.fresnobsc.com>

### EMPLOYEES

#### *“Layoff Assistance for Employees”*

- TUESDAY, APRIL 7TH AT 1 P.M.

Join URL: <https://zoom.us/j/103439707>

- THURSDAY, APRIL 9TH AT 10 A.M.

Join URL: <https://zoom.us/j/457586963>

*Hosted by: Fresno Regional Workforce  
Development Board, Martha Espinosa*

Receive information from:

- ⇒ Employment Development Department (EDD)  
Karina Blancas
- ⇒ Department of Social Services (DSS)-Jose Corchado
- ⇒ Clinica Sierra Vista-Andrea Bolanos
- ⇒ Richard Heath and Associates- May Ly
- ⇒ National Association of Mental Illness (NAMI)  
Christina Roup
- ⇒ Workforce Connection- Annette Watkins

### CONTACT

Martha Espinosa

Business Services/Rapid Response Coordinator

[mepinosa@workforce-connection.com](mailto:mepinosa@workforce-connection.com)

(559)490-7147



# THANK YOU!

Martha Espinosa

559.490.7147

[mepinosa@workforce-connection.com](mailto:mepinosa@workforce-connection.com)

mepinosa@wfc.co



Fresno Regional WDB  
**Workforce  
Connection**

This WIOA, Title 1-financially assisted program/service is an equal opportunity employer/program.  
Auxiliary aids and services are available upon request to people with disabilities and/or limited English

A proud partner of America's Job Center of California™ network.