

Fresno Regional Workforce Development Board

Tuesday, March 31, 2020

Welcome to the Rapid Response COVID-19-Information for Employees

INSTRUCTIONS:

- Make sure you are on mute.
- Please use the Chat feature and send a private message to the Host-Martha Espinosa-Kroll providing your:
 1. First and Last Name
 2. email address
 3. Company/Organization you work(ed) for



Rapid Response SERVICES

Rapid Response is a proactive business-focused and flexible strategy designed to respond to layoffs and closings by quickly coordinating services to provide immediate aid to companies and their affected workers.



Fresno Regional WDB
**Workforce
Connection**

This WIOA, Title 1-financially assisted program/service is an equal opportunity employer/program. Auxiliary aids and services are available upon request to people with disabilities and/or limited English

A proud partner of America's Job Center of California™ network.

AGENDA



(NAMI)

National Alliance on Mental Illness,
Christina Valdez-Roup



(EDD)

Employment Development
Department,
Karina Blancas



(DSS)

Department of Social Services
Jose Corchado



Clinica Sierra Vista,
Andrea Bolanos



(RHA)

Richard Heath and
Associates,
May Ly



Manpower,
Lewis Reinholt



Workforce Connection,
Annette Watkins



Resources,
Martha Espinosa

FIND HELP, FIND HOPE!



CALL THE NAMI HELPLINE

800-950-6264

OR, IN A CRISIS? TEXT **NAMI** TO **741741**

Further Information Or Support:

<https://namifresno.org/>

NAMI Fresno's HelpLine And Email

Phone: [\(559\) 224-2469](tel:5592242469) (not a crisis line)

Address: 7545 North Del Mar #105, Fresno, CA 93711

Email Address: info@namifresno.org



Fresno County
Behavioral Health

WARM Line
(559) 600-WARM (9276)

The DBH COVID-19 Warm Line provides non-emergency emotional and coping support to community members. Warm line operators provide supportive listening, practical coping ideas, and information on how to get connected to behavioral health services.

DBH COVID-19 Warm Line:

- 559-600-WARM (9276)
- Monday - Friday, 8:00AM to 5:00PM

For Crisis:

- Emergency - Dial 911
- Suicide Prevention Lifeline 1-800-273-8255
- Fresno County Access Line 1-800-654-3937
- Crisis Text Line 741741



For other support and assistance:

- NAMI-Fresno Warm-line (559) 224-2469
- Department of Public Health 600-INFO – for general information about COVID-19
- 211 (general resources)
- California Peer Run Warm-Line 1 (855) 845-7415



Website Resources:

Fresno County Public Health

- [COVID-19 Coronavirus Information](#)
- [Public Health Resources](#)

Fresno County Behavioral Health

- [Behavioral Health Resources](#)
- [fresnocares.org - Suicide Prevention](#)
- [Facebook - Fresno County Behavioral Health](#)



THE COUNTY OF FRESNO
Department of
Behavioral Health



Employment Development Department

Karina Blancas

EDD Representative

EDD

- Job Placement and Referrals
- Unemployment Insurance
- Disability Insurance
- Paid Family Leave
- Employment and Training
- Veteran's Services
- Labor Market Information
- Payroll Taxes
- And More

Unemployment

Provides income to workers who become unemployed through no fault of their own and other work is not available.

- Your place of employment has closed down due to COVID-19 restrictions
- Reduction in hours or wages
- You are self-employed

School Closures

- If your child's school is closed, and you have to miss work to be there for them, you may be eligible for Unemployment Insurance benefits. Eligibility considerations include if you have no other care options and if you are unable to continue working your normal hours remotely. File an Unemployment Insurance claim and our EDD representatives will decide if you are eligible.

Unemployment

THREE WAYS TO FILE FOR UNEMPLOYMENT

- ✓ **PHONE 1-800-300-5616** Monday-Friday 8 a.m.-12 p.m.
- ✓ **On-line (internet)** <https://www.edd.ca.gov>
- ✓ **Mail or Fax** (*information listed on form*) *Call 559-230-3600 to schedule an appointment.*

Benefits Booklet

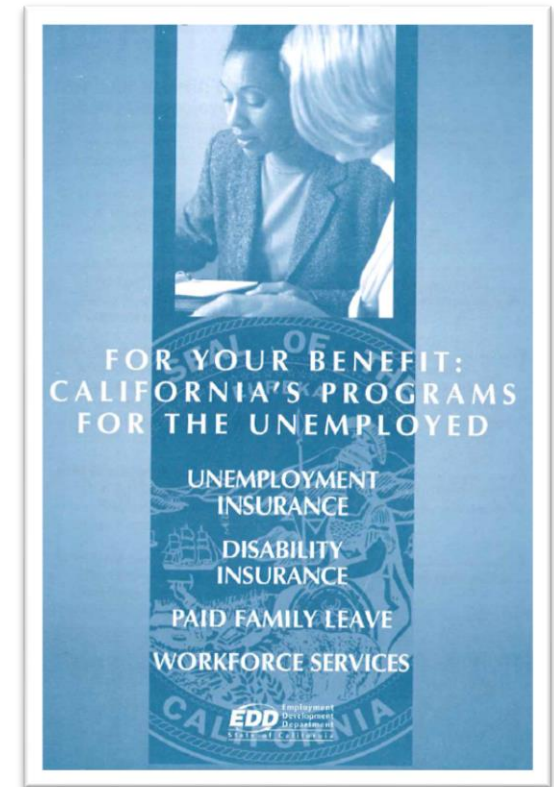
- ☐ This book is important to read. It answers most general questions you may have about unemployment.
- ☐ If you file in April they will take all of last years wages and from those 12 months, they take the highest quarter to determine your weekly benefit amount which begins on.

Federal Pandemic Unemployment Compensation, payable for any week that is equal to:

- **The amount determined under the State law, plus**
- **An additional amount of \$600 (for 4 months only)**

- ☐ There is a one week waiting period. **(Has been suspended)**
- ☐ Maximum weeks to collect unemployment is 26 weeks, which is equal to 6 months.
- ☐ There are no federal extensions at this time.

(Federal Government may fund an additional 13 weeks; The total number of weeks for which a covered individual may receive assistance cannot exceed 39 weeks.)



Cal Jobs

If you file a claim, you are required to register and create a resume on Cal-JOBS. <https://www.caljobs.ca.gov/>

California Training Benefits

- ☐ If you feel you need to return to school to upgrade your skills, you need to read this pamphlet.
- ☐ You need to make sure you inquire about CTB by the 16th week of collecting unemployment, otherwise you will be ineligible.

Disability

Provides short-term, partial wage replacement benefits to workers who are unable to work due to a non-work related illness or injury, pregnancy or Childbirth.

WAYS TO FILE:

Online: www.edd.ca.gov/disability

1-800-480-3287

Sick or Quarantined

If you're unable to work due to having or being exposed to COVID-19 (certified by a medical professional), you can [file a Disability Insurance \(DI\) claim](#). DI provides short-term benefit payments to eligible workers who have a full or partial loss of wages due to a non-work-related illness, injury, or pregnancy. Benefit amounts are approximately 60-70 percent of wages (depending on income) and range from \$50-\$1,300 a week.

Telehealth and virtual appointments are acceptable for a physical examination, but medical certifications are still required.

The [Governor's Executive Order](#) waives the one-week unpaid waiting period, so you can collect DI benefits for the first week you are out of work. If you are eligible, the EDD processes and issues payments within a few weeks of receiving a claim.

Paid Family Leave

- Partial wage replacement benefits to individuals who need to take time off work to care for a seriously ill child, parent, parent in law, grandparent, grandchild, sibling, spouse or registered domestic partner. Benefits are also available to parents who need time to bond with a new entering their family either by birth, adoption, or foster care placement
- There is no waiting period.

WAYS TO FILE:

Online: <https://www.edd.ca.gov/disability/SDI Online.htm>

For more information go to:

www.edd.ca.gov/disability/paid_family_leave.htm

Call Monday-Friday 8 a.m.-5 p.m. 1-877-238-4373

Mail: You can obtain a paper *Claim for Paid Family Leave (PFL) Benefits* (DE 2501F) form a few different ways:

- Visit Online Forms and Publications <https://forms.edd.ca.gov/forms> and order a form online. A form will be mailed to you.
- Obtain the form from your physician/practitioner or employer.
- Visit an [SDI Office](#).

Caregiving

- If you're unable to work because you are caring for an ill or quarantined family member with COVID-19 (certified by a medical professional), you can [file a Paid Family Leave \(PFL\) claim](#). PFL provides up to six weeks of benefit payments to eligible workers who have a full or partial loss of wages because they need time off work to care for a seriously ill family member or to bond with a new child. Benefit amounts are approximately 60-70 percent of wages (depending on income) and range from \$50-\$1,300 a week. If you are eligible, the EDD processes and issues payments within a few weeks of receiving a claim.
- Telehealth and virtual appointments are acceptable for a physical examination, but medical certifications are still required.



Veteran Resources

We do have Veterans representatives here at our offices. We are directed to give them the main switchboard number 230-4158. We're proud to provide priority services to all veterans, and to help you and your eligible spouse find jobs and maximize your employment and training opportunities. Our veteran representatives specialize in helping you return to work and offer the following services:

- ❖ A 24-hour priority hold on all job listings just for veterans
- ❖ Customized job search assistance
- ❖ Job fairs and workshops
- ❖ Employer recruitments
- ❖ Other events and resources

https://www.edd.ca.gov/jobs_and_training/services_for_veterans.htm



DEPARTMENT OF SOCIAL SERVICES

JOSE CORCHADO

DSS Lobby Closures Effective 4/1/20

- For questions regarding your Cal Fresh, Medi-Cal or CalWORKs case you can contact the Call Center Monday - Friday 7:30am to 4:30pm at 1-855-832-8082
- Apply for benefits www.mybenefitscalwin.org
- Report Child Abuse or Neglect – 24 Hour Hotline 600-8320
- Report Elder/Dependent Adult Abuse- 24 Hour Hotline 600-3383 or (800) 418-1426

Public Assistance

• OPEN FOR SELF SERVICES & EMERGENCY SERVICES – FRESNO METRO & REGIONAL OFFICES

- Heritage- 3151 N. Millbrook- Self Service and Scheduled EBT/Emergency BIC
- Main- 4455 E. Kings Canyon Rd- Self Service and Scheduled EBT/Emergency BIC
- "E" Street - 1209 "E" Street (SOFT CLOSE –General Relief Clients with No Address or Phone)
- Selma- 3800 N. McCall Ave- Self Service and Scheduled EBT/Emergency BIC
- Reedley-1680 E. Manning Ave- Self Service and Scheduled EBT/Emergency BIC
- Coalinga- 311 Coalinga Plaza- Self Service and Scheduled EBT/Emergency BIC
- Kerman- 15180 W. Whitesbridge Ave-Self Service and Scheduled EBT/Emergency BIC

• OPEN FOR LIMITED SERVICES

- Fairgrounds - 4468 E. Kings Canyon Rd – **DROP BOX ONLY**
- Barton- 4499 E. Kings Canyon Rd- Homeless/General Relief clients with NO phone access for State Hearing Purposes Only

• CLOSED TO THE PUBLIC

- West Fresno, Sunnyside, Senior Resource Center, Commissary 1st and 2nd and Huntington Hall – **CLOSED**

Child Welfare

• OPEN FOR LIMITED SERVICES

- "L" Street - 1404 "L" Street– **Services requiring in person contact**
- Taft- 3688 E. Shields Ave – **Limited Services to Foster Youth**

• CLOSED TO THE PUBLIC

- West Fresno Regional Center, Center Mall Court, Fulton and Gallery Plaza – **CLOSED**

Fresno County Department of Social Services resource information

- Contact MAP Point (559) 512-6777 to find emergency shelter space currently available. DSS continues to work with partner agencies to bring more facilities online.
- DSS online and call center are a convenient and secure way to apply for program services, maintain eligibility and seek answers to your questions. Online Resources:

• Apply for Benefits at www.mybenefitscalwin.org

- Benefit programs: CalFresh, Medi-Cal, CalWORKs, and General Relief
- You will be contacted by telephone and mail to inform you of the date and time of your telephone interview.

• Personal Access to Social Services (P.A.S.S.) – Visit DSSPASS.fresnocountyca.gov

- Access Case Information
- Download Grant Verifications (WHIS reports)
- Upload Documents and verifications

• Need to reschedule your appointment or missed your appointment? Call: 1-855-832-8082

- Hours of operations: Monday through Friday from 7:30 a.m. - 4:30 p.m.

• Request a new Medi-Cal BIC card by calling 1-877-600-1377 and follow the prompts

- Available 24 hours a day

• Request a replacement EBT card by calling 1-877-328-9677

- Available 24 hours a day
- You will never be asked for your PIN Number

• 24/7 Automated System: 1-877-600-1377

- Case and Benefit Information

CalFresh (Food Stamps)

Provides low-income households with monthly benefits

Supplements households income for the purchase of food items

Who can get CalFresh:

- Families
- Single Adults
- Unemployed / Employed
- Elderly or disabled
- Homeless
- College students
 - Working 20 hours per week

CalWORKs

(Cash aid - families with children)

Automated information about your Cash,
Food, or Medi-Cal case:

Access your case online at:

<https://www.mybenefitscalwin.org/>

If you need to speak to a worker,
1-855-832-8082

between 7:30 am-4:30 pm

Any worker who answers the phone will be
able to assist you

MEDI-CAL

Medi-Cal is California's public health insurance program, patterned after the Federal Medicaid program, designed to provide no-cost or low-cost medical benefits to low income individuals and families. Enrollment for Medi-Cal coverage is open all year.

Who May Be Eligible For Medi-Cal

- Children under the age of 21
- Pregnant individuals
- Low income families
- Adults without children, 19 to 64 years of age
- Individuals over 65 years of age
- Individuals with disabilities
- Financial Eligibility
- To be eligible for no cost Medi-Cal, a single adult individual must have an annual income lower than 138 percent of the federal poverty level. For families the income limit may be higher, as it depends on number of individuals in the household. Those exceeding income limits may qualify for low cost health insurance plans through Covered California.
- For certain Medi-Cal programs along with income limits, property limits may apply to all applicants except pregnant individuals and children ages 0 to 18.
- For more information or to apply online, please visit [My Benefits CalWIN](#) or [Covered California](#).

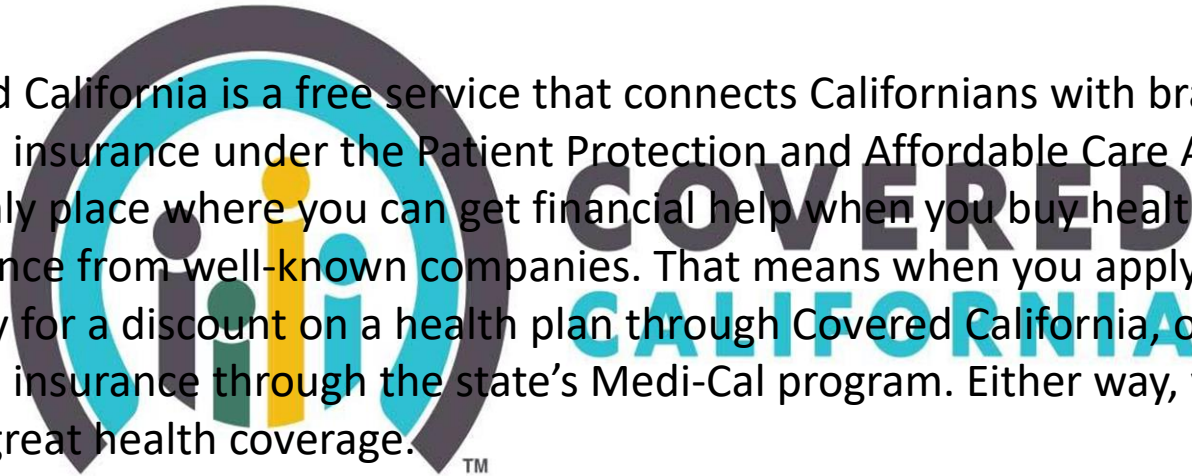
Benefits CalWIN

(www.mybenefitscalwin.org)


- Online website for clients to apply for Fresno County public assistance programs, including CalWORKs (cash aid), CalFresh (food stamps), and Medi-Cal
- Clients can apply for services 24/7 without having to come into a DSS office.
- Other online services available include: view benefit amount and program status, complete reports, request a Medi-Cal replacement card, request forms.

What is Covered CA

Covered California is a free service that connects Californians with brand-name health insurance under the Patient Protection and Affordable Care Act. It's the only place where you can get financial help when you buy health insurance from well-known companies. That means when you apply, you may qualify for a discount on a health plan through Covered California, or get health insurance through the state's Medi-Cal program. Either way, you'll have great health coverage.



Federal Poverty Level



SEE NOTE BELOW
FOR INCOMES IN
THIS RANGE

California State Subsidy

Federal Tax Credit

American Indian / Alaska Native (AIAN) Zero Cost Share

AIAN Limited Cost Share

Silver 94
(100%-150%)

Silver 87
(>150%-200%)

Silver 73
(>200%-250%)

% FPL	0%	100%	138%	150%	200%	213%	250%	266%	300%	322%	400%	600%
1	\$0	\$12,490	\$17,237	\$18,735	\$24,980	\$26,604	\$31,225	\$33,224	\$37,470	\$40,218	\$49,960	\$74,940
2	\$0	\$16,910	\$23,336	\$25,365	\$33,820	\$36,019	\$42,275	\$44,981	\$50,730	\$54,451	\$67,640	\$101,460
3	\$0	\$21,330	\$29,436	\$31,995	\$42,660	\$45,433	\$53,325	\$56,738	\$63,990	\$68,683	\$85,320	\$127,980
4	\$0	\$25,750	\$35,535	\$38,625	\$51,500	\$54,848	\$64,375	\$68,495	\$77,250	\$82,915	\$103,000	\$154,500
5	\$0	\$30,170	\$41,635	\$45,255	\$60,340	\$64,263	\$75,425	\$80,253	\$90,510	\$97,148	\$120,680	\$181,020
6	\$0	\$34,590	\$47,735	\$51,885	\$69,180	\$73,677	\$86,475	\$92,010	\$103,770	\$111,380	\$138,360	\$207,540
7	\$0	\$39,010	\$53,834	\$58,515	\$78,020	\$83,092	\$97,525	\$103,767	\$117,030	\$125,613	\$156,040	\$234,060
8	\$0	\$43,430	\$59,934	\$65,145	\$86,860	\$92,506	\$108,575	\$115,524	\$130,290	\$139,845	\$173,720	\$260,580
add'l, add	\$0	\$4,420	\$6,100	\$6,630	\$8,840	\$9,415	\$11,050	\$11,758	\$13,260	\$14,233	\$17,680	\$26,520



Medi-Cal for Adults

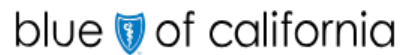
Medi-Cal for Pregnant Women

Medi-Cal Access Program
(for Pregnant Women)

Medi-Cal for Kids
(0-18 Yrs.)

County Children's
Health Initiative
Program

Note: Most consumers up to 138% FPL will be eligible for Medi-Cal. If ineligible for Medi-Cal, consumers may qualify for a Covered California health plan with financial help including: federal tax credit, California state subsidy, Enhanced Silver plans and AIAN plans.



Sliding Fee Scale at Clinica Sierra Vista

The discount program is for patients without health insurance or basic health coverage who cannot afford the cost of their medical or dental consultation. You may be eligible for Clinica Sierra Vista's discount program. The discount is based on family size and household income.

- Covers Medical and Dental services*, and specialty services*

**cost varies*

Family Size	Gross Household Monthly Income									
	0% - 100%	101% - 133%	134% - 166%	167% - 200%	201%+					
1	0 - 1012	1,013 - 1,346	1,347 - 1,679	1,680 - 2,023	2,024					
2	0 - 1372	1,373 - 1,824	1,825 - 2,277	2,278 - 2,743	2,744					
3	0 - 1732	1,733 - 2,303	2,304 - 2,875	2,876 - 3,463	3,464					
4	0 - 2092	2,093 - 2,782	2,783 - 3,472	3,473 - 4,183	4,184					
5	0 - 2452	2,453 - 3,261	3,262 - 4,070	4,071 - 4,903	4,904					
6	0 - 2812	2,813 - 3,740	3,741 - 4,667	4,668 - 5,623	5,624					
7	0 - 3172	3,173 - 4,218	4,219 - 5,265	5,266 - 6,343	6,344					
8	0 - 3532	3,533 - 4,697	4,698 - 5,863	5,864 - 7,063	7,064					
9	0 - 3892	3,893 - 5,176	5,177 - 6,460	6,461 - 7,783	7,784					
10	0 - 4252	4,253 - 5,655	5,656 - 7,058	7,059 - 8,503	8,504					
11	0 - 4612	4,613 - 6,134	6,135 - 7,655	7,656 - 9,223	9,224					
12	0 - 4972	4,973 - 6,612	6,613 - 8,253	8,254 - 9,943	9,944					
13	0 - 5332	5,333 - 7,091	7,092 - 8,851	8,852 - 10,663	10,664					
14	0 - 5692	5,693 - 7,570	7,571 - 9,448	9,449 - 11,383	11,384					
15	0 - 6052	6,053 - 8,049	8,050 - 10,046	10,047 - 12,103	12,104					

FCL/Category	610/A				625/B				650/C				675/D	699/SP
--------------	-------	--	--	--	-------	--	--	--	-------	--	--	--	-------	--------

Fees	Nominal Fee \$10.00													100% of charges
					\$20.00				\$30.00				\$40.00	

Category	Medical	Dental
A	\$10	\$40
B	\$20	50%
C	\$30	75%
D	\$40	75%

Clinica Sierra Vista

Clinica Sierra Vista offers the following programs:

- Family Medicine
- Behavioral Health Services
- Internal Medicine
- Comprehensive Health Services
- Pediatrics
- Comprehensive Prenatal Specialty Services
- OBGYN
- Health Insurance Assistance Services
- Podology
- Nutrition Program WIC
- Vaccinations

Clinica Sierra Vista Medical Centers

Elm Walk-In Clinic

**2740 S. Elm Avenue
Fresno, CA 93706**

Monday - Sunday, 8:00 am – 8:00 pm

Elm Family Community Health Center

**2740 S. Elm Avenue
Fresno, CA 93706
559-457-5200**

Monday - Saturday, 8:00 am – 7:00 pm

Elm Women's & Pediatric Community Health Center

**2760 S. Elm Avenue
Fresno, CA 93706
559-457-5300**

Monday - Friday, 8:00 am – 7:00 pm

Garland Community Health Center

**3727 N. First Street, Suite 106
Fresno, CA 93726
559-457-6900**

Monday - Friday, 8:00 am – 5:00 pm

Gaston Health and Wellness Center

**1120 E. Church Avenue
Fresno, CA 93706
559-457-6700**

Monday - Friday, 7:30 am – 4:00 pm

North Fine Community Health Center

**1945 N. Fine Avenue, Suite 100
Fresno, CA 93727
559-457-5650**

Monday - Friday, 8:00 am – 5:00 pm

Orange & Butler Community Health Center

**1350 S. Orange Avenue
Fresno, CA 93702
559-457-5400**

Monday - Friday, 8:00 am – 5:00 pm

RMC Community Health Center

**2505 E. Divisadero Street
Fresno, CA 93721
559-457-5500**

Monday - Saturday, 8:00 am – 5:00 pm

West Fresno Community Health Center

**302 Fresno Street, Suite 101
Fresno, CA 93706
559-457-5700**

Monday - Friday, 8:00 am – 5:00 pm

West Shaw Community Health Center

**3645 W Shaw Avenue, Suite 101
Fresno, CA 93711
559-457-6800**

Monday - Friday, 8:30 am - 5:30 pm

Dental Offices and Behavioral Health

Dental Centers

Dental Center - Elm

2756 S. Elm Avenue

Fresno, CA 93706

559-457-5345

Monday - Saturday, 8:00 am – 7:00 pm

Dental Center - West Fresno

302 Fresno Street, Suite 204

Fresno, CA 93706

559-457-5780

Monday - Friday, 8:00 am – 5:00 pm

Behavioral Health Services in the following Health Centers

Community Resource Center

1305 E. Divisadero Avenue

559-457-5960

Elm Family Community Health Center

2740 S. Elm Avenue

Centro de Salud - Gaston

1120 E. Church Avenue

Centro de Salud - North Fine

1945 N. Fine Avenue, Suite 100

Centro de Salud - Orange & Butler

1350 S. Orange Avenue

Centro de Salud - West Shaw

3451 W. Shaw Avenue, Suite 102

SPECIALTY BEHAVIORAL HEALTH SERVICES

North Fine - Adultos

2002 N. Fine Avenue, Suite 100

559-457-6975

North Fine - Niños

2010 N. Fine Avenue, Suite 105

559-457-6976

West Fresno - Adultos y Niños

302 Fresno Street, Suite 106

559-457-5750

West Shaw - Adultos

3451 W. Shaw Avenue, Suite

101

West Shaw - Niños

3451 W. Shaw Avenue, Suite

102

For a medical appointment please call:

1-833-278-4584

For questions about Health Insurance

Eligibility please call

1-855-867-7216





RICHARD HEATH AND ASSOCIATES

May Ly

Program Specialist, CLCA



This WIOA, Title 1-financially assisted program/service is an equal opportunity employer/program.
Auxiliary aids and services are available upon request to people with disabilities and/or limited English

A proud partner of America's Job Center of California™ network.



CALIFORNIA'S LOW COST AUTO (CLCA)

BY: MAY LY, PROGRAM SPECIALIST NORTHERN CALIFORNIA

March 2020



CALIFORNIA'S
LOW COST
AUTO INSURANCE



CALIFORNIA
DEPARTMENT OF INSURANCE

CALIFORNIA'S Low Cost Auto Program

- CA Low Cost Auto is a state-sponsored program, passed by the CA legislature and managed by the CA Department of Insurance.
- CLCA provides affordable, low cost liability insurance to eligible California drivers who meet income and eligibility guidelines
- Benefits not just low-income drivers, many middle-class households may qualify.
- Apply on-line at: [MYLOWCOSTAUTO.COM](https://mylowcostauto.com)
 - Chat feature available for assistance
 - Website availability in Spanish

ELIGIBILITY AND RATES

Household Size	Annual Income 250% of FPL
1	\$31,900
2	\$43,100
3	\$54,300
4	\$65,500
5	\$76,700
6	\$87,900

Zone 1 Counties: Fresno, Kings, Madera, Monterey, San Benito, San Luis Obispo, Santa Barbara, Santa Cruz, and Tulare

Base Rate \$244
Unmarried 19-24 Years \$317
Less Than 3 Years \$342
Drivers 16-18 Years \$488

Eligibility Guidelines:

- ***Applicants must have a valid CA Driver's License***
- ***Have a vehicle valued at \$25,000 or less***
- ***Meet Income Guidelines***
- ***Be at least 16***

CLCA offers two payment options: *Payment in full OR 20% down with 7 installment payments (Installment fee of \$4.00 applies)*



FRESNO COUNTY LIBRARY

Online Services

Jobs & Career

<http://www.fresnolibrary.org/>

EBSCO LearningExpress®
Career Preparation

Career Preparation - LearningExpress

Are you preparing for a professional exam? Are you curious about a particular occupation or looking to improve your workplace skills? Prepare for an occupation exam in social work (ASWB), civil service, law enforcement, teaching (CBEST), and more! Choose the Career Preparation Center and begin your path to a bright future.



DigiBus

Learn computer basics and benefit from job readiness skills specific to Fresno. Resources in 8 subject areas, covering the complete job life cycle.



EBSCO LearningExpress®
Job & Career
Accelerator

Job & Career Accelerator - LearningExpress

Find a career match, explore occupations, search for jobs and internships, and tools to get hired. Browse the career library and college finder.



Job Now

Get online job and career coaching, resume assistance, and interview practice.



Lynda

Lynda.com helps anyone learn software, technology, creative, and business skills to achieve their personal and professional goals. Requires valid library barcode and PIN to use.





The Library will be answering the following library phone lines in order to create new library cards, troubleshoot issues with existing library accounts, and offer assistance in accessing online resources, including eBooks, audiobooks, research databases and streaming content:

Monday through Friday, 9 a.m. - 12 p.m. and 1 p.m. - 5 p.m.

- ❖ Fig Garden Regional Library: (559) 600-4071
- ❖ Sunnyside Regional Library: (559) 600-6594
- ❖ Woodward Regional Library: (559) 600-3135
- ❖ Betty Rodriguez Regional Library: (559) 600-9245
- ❖ Clovis Regional Library: (559) 600-9531

For assistance with cards and more complicated reference questions, please call:

Central Library at 600-READ (7323)

Monday through Friday, 10 a.m. - 12 p.m. and 1 p.m. - 5 p.m.

Para servicios en Español: (559) 301-6097



Lewis Reinholt

MANPOWER

What do we do?

Warehouse

Forklift
Pick/Pack
Shipping/Receiving
General Labor

Manufacturing

Assembly
Machinists
CNC Operators
Welders
Maintenance Mechanics
General Labor
Forklift
Quality Assurance

Food Processing

General Labor
Sanitation
Machine Operators
Forklift
Pick/Pack
Quality Control

Administrative Positions

Call Center
Admin Assts
Receptionists
Accounting

Contact Lewis Reinholt
559-260-7108 or email at
lewis.reinholt@manpower.com

Text Manpower at
44844 to apply.





WORKFORCE CONNECTION SERVICES

Annette Watkins

Outreach/Workshop Facilitator



This WIOA, Title 1-financially assisted program/service is an equal opportunity employer/program.
Auxiliary aids and services are available upon request to people with disabilities and/or limited English

A proud partner of America's Job Center of California™ network.

Adjustments to Workforce Connection COVID-19 Guidelines

Please visit our website to review the full copy of the guidelines:

www.workforce-connection.com

All career counseling and resource room services will be provided telephonically, via email and other technologies.

Hours of operation at Manchester Center **only** are:
8am to 5pm by ***appointment only***

To schedule appointments call **(559) 230-4092**



This WIOA, Title 1-financially assisted program/service is an equal opportunity employer/program.
Auxiliary aids and services are available upon request to people with disabilities and/or limited English

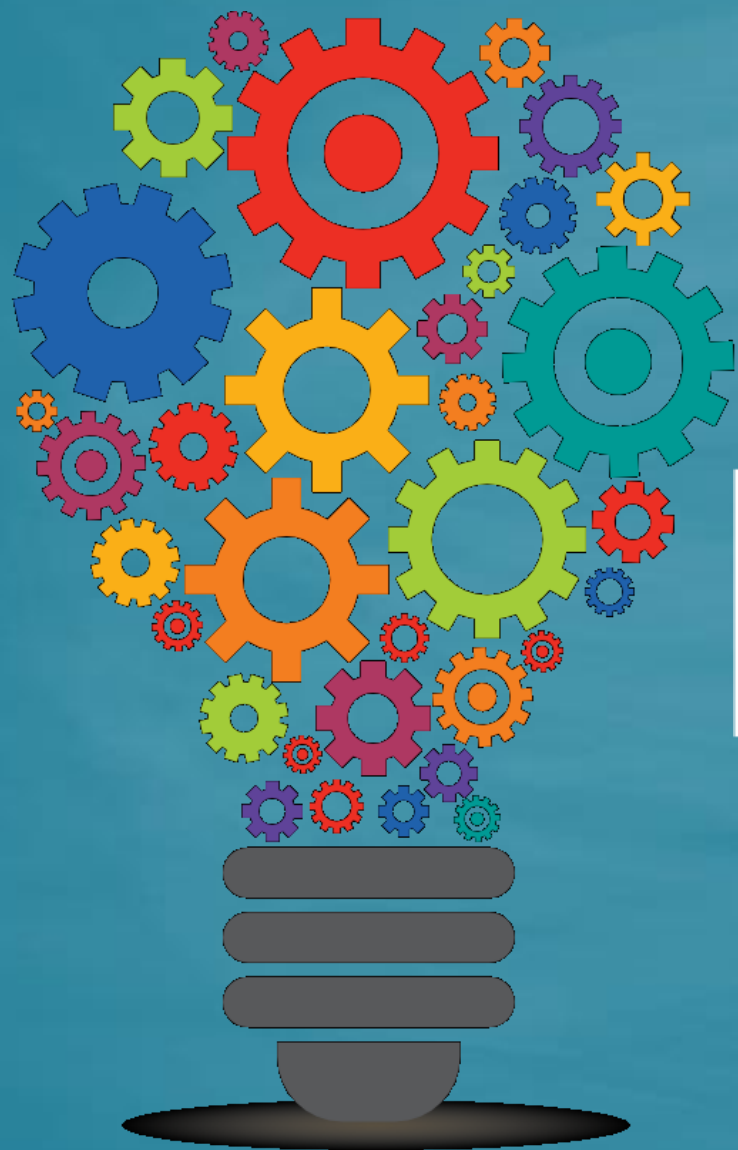
A proud partner of America's Job Center of California™ network.

What Does Workforce Connection Offer?

- **Self-Directed Services-Resource Room**
 - Internet Access
 - Phones to call employers
 - Fax to send out resumes
 - Copy Machine
- **Staff Assisted Services**
- **Training Services**
- **Referrals**

Staff Directed Services

- Career Assessments
- Career Guidance
- [Educational and Training Opportunities](#)
- Job Readiness Workshops
- Job Placement Assistance



RESOURCES

RESOURCES

- **City of Fresno-** There will be a 30-day moratorium on shutting off any water or garbage service for lack of payment.
- **Meal Distribution-**
 - Most school districts are providing sack lunches, please look at your school district's website for time/school sites
 - Catholic Charities Monday-Friday 8:30 a.m. -11 a.m. and 1 p.m.-3 p.m. 149 N. Fulton St., Fresno *Must bring ID and Medical Cards of children in the household*
 - Grocey Delivery-Bitwise Industries will deliver food to the sick and elderly. Call 559-460-7809 or email groceries@bitwiseindustries.com They accept cash, check and mobile pay. They will cover the cost of groceries if the individual is using an EBT card.
- **Lenders-**Contact your mortgage and car loan lenders. Many of them may offer to defer payments if you specifically state that you have been impacted by COVID 19.
- **Price Gouging-**It's illegal to raise the price of essential goods, services, and lodging by more than 10 percent after an emergency has been declared. If you suspect a business is price gouging, please call the City Attorney's office at (559) 621-8400.
- **Taxes-**Tax Deadline has been moved to July 15, 2020

RESOURCES

➤ **Utilities-PG&E** Implemented a series of billing and service modifications to support customers who have been impacted by the pandemic:

- Suspending service disconnections for non-payment and waiving security deposits;
- Implementing flexible payment plan options; and
- Providing additional support for low-income and medical baseline customers.

Go to pge.com/covid19consumerprotections to learn more about our support for customers during these difficult times.

Customers are advised to be aware of scammers taking advantage of the current situation with calls and emails threatening to shut off power if a payment is not made. Anyone who has received such a call can report it immediately by calling PG&E at [1-800-743-5000](tel:1-800-743-5000) or visit pge.com/scams.

RESOURCES

- Fresno Business Services

<http://www.fresnobsc.com/>

- Fresno Economic Development Corporation

<https://www.fresnoedc.com/>

- City of Fresno and/or your local city website

<https://www.fresno.gov/coronavirus/>

- Fresno Unified School District and/or your local school district

<https://www.fresnounified.org/>



JOBS

Company/Organization	Contact Information/Link
Amazon	https://www.amazon.jobs/en-gb/
Aldi	https://careers.aldi.us/
Costco	https://www.costco.com/jobs.html
CVS Health-Here	https://bit.ly/2y2Sa3i
Dollar General	https://careers.dollargeneral.com/
Domino's	https://jobs.dominos.com/dominos-careers/
Papa John's	https://jobs.papajohns.com/
Save Mart	https://www.savemart.com/careers
Walmart	https://careers.walmart.com/

ADDITIONAL WEBINARS

March 30th-April 3rd

BUSINESSES

"Downsizing and Retooling to Sustain Business"

THURSDAY, APRIL 2ND AT 4 P.M.

No Cost | Registration Required

bit.ly/IFBAttend

Hosted by: Fresno State Institute for Family Business

Receive information from:

- ⇒ Sierra HR Partners-Brenda Budke
- ⇒ Small Business Administration (SBA)
Victor Bribiesca
- ⇒ Employment Development Department (EDD)
Kelly Foster-Nelum

RESUME WORKSHOP NOW AVAILABLE

"Resume Writing 101:

Foundation Skills to Build a Dynamic Resume"

FRIDAY, APRIL 3RD 1-5 P.M.

NO COST | REGISTRATION REQUIRED

<https://tinyurl.com/resume040320>

HOSTED BY: STATE CENTER COMMUNITY COLLEGE DISTRICT'S
TRAINING INSTITUTE

EMPLOYEES

"Layoff Assistance for Employees"

• **TUESDAY, MARCH 31ST AT 10 A.M.**

Join URL: <https://zoom.us/j/475199982>

• **THURSDAY, APRIL 2ND AT 10 A.M.**

Join URL: <https://zoom.us/j/124918733>

****EN ESPANOL****

"Recursos para trabajadores afectados de COVID-19"

• **MIERCOLES, 1 DE ABRIL A LA 1 P.M.**

Join URL: <https://zoom.us/j/977193642>

*Hosted by: Fresno Regional Workforce
Development Board, Martha Espinosa*

Receive information from:

- ⇒ Employment Development Department (EDD)
Karina Blancas
- ⇒ Department of Social Services (DSS)-Jose Corchado
- ⇒ Clinica Sierra Vista-Gladys Duron
- ⇒ Richard Heath and Associates- May Ly
- ⇒ National Association of Mental Illness (NAMI)
Christina Roup
- ⇒ Workforce Connection-Annette Watkins

CONTACT

Martha Espinosa

Business Services/Rapid Response Coordinator

mespinosa@workforce-connection.com

(559)490-7147

THANK YOU!

Martha Espinosa

559.490.7147

mespinosa@workforce-connection.com

mespinosa@wfc.co



This WIOA, Title 1-financially assisted program/service is an equal opportunity employer/program.
Auxiliary aids and services are available upon request to people with disabilities and/or limited English

A proud partner of America's Job Center of California™ network.