

Fresno Regional Workforce Development Board

Wednesday, March 25, 2020

Welcome to the Rapid Response COVID-19-Information for Employees

INSTRUCTIONS:

- Make sure you are on mute.
- Please use the Chat feature and send a private message to the Host-Martha Espinosa-Kroll providing your:
 1. First and Last Name
 2. email address
 3. Company/Organization you work(ed) for



This WIOA, Title 1-financially assisted program/service is an equal opportunity employer/program. Auxiliary aids and services are available upon request to people with disabilities and/or limited English



Rapid Response SERVICES

Rapid Response is a proactive business-focused and flexible strategy designed to respond to layoffs and closings by quickly coordinating services to provide immediate aid to companies and their affected workers.



Fresno Regional WDB
**Workforce
Connection**

This WIOA, Title 1-financially assisted program/service is an equal opportunity employer/program. Auxiliary aids and services are available upon request to people with disabilities and/or limited English

A proud partner of America's Job Center of California™ network.

AGENDA



(NAMI)

National Alliance on Mental Illness,
Christina Valdez-Roup



(EDD)

Employment Development
Department,
Karina Blancas



(DSS)

Department of Social Services



Clinica Sierra Vista,
Gladys Duron



(RHA)

Richard Heath and
Associates,
May Ly



Manpower,
Lewis Reinholt



Workforce Connection,
Annette Watkins



Resources,
Martha Espinosa



Fresno Regional WDB
**Workforce
Connection**

This WIOA, Title 1-financially assisted program/service is an equal opportunity employer/program.
Auxiliary aids and services are available upon request to people with disabilities and/or limited English

A proud partner of America's Job Center of California™ network.

FIND HELP, FIND HOPE!



CALL THE NAMI HELPLINE

800-950-6264

OR, IN A CRISIS? TEXT **NAMI** TO **741741**

Further Information Or Support:

<https://namifresno.org/>

NAMI Fresno's HelpLine And Email

Phone: [\(559\) 224-2469](tel:(559)224-2469) (not a crisis line)

Address: 7545 North Del Mar #105, Fresno, CA 93711

Email Address: info@namifresno.org



Employment Development Department Karina Blancas EDD Representative



This WIOA, Title 1-financially assisted program/service is an equal opportunity employer/program.
Auxiliary aids and services are available upon request to people with disabilities and/or limited English

EDD

- Job Placement and Referrals
- Unemployment Insurance
- Disability Insurance
- Paid Family Leave
- Employment and Training
- Labor Market Information
- Payroll Taxes
- And More



This WIOA, Title 1-financially assisted program/service is an equal opportunity employer/program. Auxiliary aids and services are available upon request to people with disabilities and/or limited English

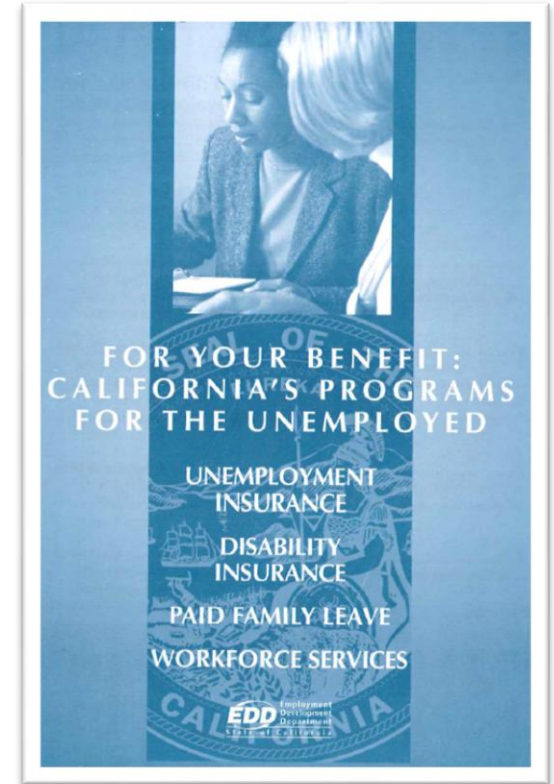
EDD

THREE WAYS TO FILE FOR UNEMPLOYMENT

- ✓ **PHONE 1800-300-5616 Monday-Friday 8 a.m.-12 p.m.**
- ✓ **On-line (internet) <https://www.edd.ca.gov>**
- ✓ **Mail or Fax**

Benefits Booklet

- This book is important to read. It answers most general questions you may have about unemployment.
- If you file in June they will take all of last years wages and from those 12 months, they take the highest quarter to determine your weekly benefit amount which begins on page 6.
- There is a one week waiting period.
- Maximum weeks to collect unemployment is 26 weeks, which is equal to 6 months.
- There are no federal extensions at this time.



Cal Jobs

If you file a claim, you are required to register and create a resume on Cal-JOBS.

California Training Benefits

- If you feel you need to return to school to upgrade your skills, you need to read this pamphlet.
- You need to make sure you inquire about CTB by the 16th week of collecting unemployment, otherwise you will be ineligible.



This WIOA, Title 1-financially assisted program/service is an equal opportunity employer/program. Auxiliary aids and services are available upon request to people with disabilities and/or limited English



DEPARTMENT OF SOCIAL SERVICES



This WIOA, Title 1-financially assisted program/service is an equal opportunity employer/program. Auxiliary aids and services are available upon request to people with disabilities and/or limited English

A proud partner of America's Job Center of California™ network.

CalFresh (Food Stamps)

Provides low-income households with monthly benefits

Supplements households income for the purchase of food items

Who can get CalFresh:

- Families
- Single Adults
- Unemployed / Employed
- Elderly or disabled
- Homeless
- College students
 - Working 20 hours per week

CalWORKs

(Cash aid - families with children)

Automated information about your Cash, Food, or Medi-Cal case:

Get answers to your most frequently asked questions 24 hours a day, 7 days a week through our automated system toll free at:

1 (877) 600-1377

Access your case online at: [My Benefits CalWIN](#)

If you need to speak to a worker, simply call (559) 600-9980 or toll free

1-855-832-8082 between 7:30 am-4:30 pm

Any worker who answers the phone will be able to assist you

MEDI-CAL

Medi-Cal is California's public health insurance program, patterned after the Federal Medicaid program, designed to provide no-cost or low-cost medical benefits to low income individuals and families. Enrollment for Medi-Cal coverage is open all year.

Who May Be Eligible For Medi-Cal

- Children under the age of 21
- Pregnant individuals
- Low income families
- Adults without children, 19 to 64 years of age
- Individuals over 65 years of age
- Individuals with disabilities
- Financial Eligibility
- To be eligible for no cost Medi-Cal, a single adult individual must have an annual income lower than 138 percent of the federal poverty level. For families the income limit may be higher, as it depends on number of individuals in the household. Those exceeding income limits may qualify for low cost health insurance plans through Covered California.
- For certain Medi-Cal programs along with income limits, property limits may apply to all applicants except pregnant individuals and children ages 0 to 18.
- For more information or to apply online, please visit [My Benefits CalWIN](#) or [Covered California](#).

Benefits CalWIN

(www.mybenefitscalwin.org)

- Online website for clients to apply for Fresno County public assistance programs, including CalWORKs (cash aid), CalFresh (food stamps), and Medi-Cal
- Clients can apply for services 24/7 without having to come into a DSS office.
- Other online services available include: view benefit amount and program status, complete reports, request a Medi-Cal replacement card, request forms.

Application Channels



- **Online**

- Through Covered California website (www.coveredca.com)
- Through appropriate SAWS Portal (www.mybenefitscalwin.org)



- **By Phone**

- Statewide phone number with warm handoff to network of designated county service centers using Quick Sort questions (1-888-975-1142)
- Direct to county or county call center (1-855-832-8082)



- **Mail**

- Sent to Covered California
- Sent to county human services department

Benefits CalWIN

(www.mybenefitscalwin.org)

- Mobile app available in Apple and Android stores under “CalWIN Benefits”
- Clients can utilize computer stations at DSS offices
- We encourage community organizations to provide internet access to consumers.

What is Covered


Covered California is a free service that connects Californians with brand-name health insurance under the Patient Protection and Affordable Care Act. It's the only place where you can get financial help when you buy health insurance from well-known companies. That means when you apply, you may qualify for a discount on a health plan through Covered California, or get health insurance through the state's Medi-Cal program. Either way, you'll have great health coverage.



TM

**COVERED
CALIFORNIA**

Federal Poverty Level



SEE NOTE BELOW FOR INCOMES IN THIS RANGE

California State Subsidy

Federal Tax Credit

American Indian / Alaska Native (AIAN) Zero Cost Share


AIAN Limited Cost Share

Silver 94 (100%-150%)

Silver 87 (>150%-200%)

Silver 73 (>200%-250%)

Household Size	% FPL	0%	100%	138%	150%	200%	213%	250%	266%	300%	322%	400%	600%
	1		\$0	\$12,490	\$17,237	\$18,735	\$24,980	\$26,604	\$31,225	\$33,224	\$37,470	\$40,218	\$49,960
2		\$0	\$16,910	\$23,336	\$25,365	\$33,820	\$36,019	\$42,275	\$44,981	\$50,730	\$54,451	\$67,640	\$101,460
3		\$0	\$21,330	\$29,436	\$31,995	\$42,660	\$45,433	\$53,325	\$56,738	\$63,990	\$68,683	\$85,320	\$127,980
4		\$0	\$25,750	\$35,535	\$38,625	\$51,500	\$54,848	\$64,375	\$68,495	\$77,250	\$82,915	\$103,000	\$154,500
5		\$0	\$30,170	\$41,635	\$45,255	\$60,340	\$64,263	\$75,425	\$80,253	\$90,510	\$97,148	\$120,680	\$181,020
6		\$0	\$34,590	\$47,735	\$51,885	\$69,180	\$73,677	\$86,475	\$92,010	\$103,770	\$111,380	\$138,360	\$207,540
7		\$0	\$39,010	\$53,834	\$58,515	\$78,020	\$83,092	\$97,525	\$103,767	\$117,030	\$125,613	\$156,040	\$234,060
8		\$0	\$43,430	\$59,934	\$65,145	\$86,860	\$92,506	\$108,575	\$115,524	\$130,290	\$139,845	\$173,720	\$260,580
add'l add		\$0	\$4,420	\$6,100	\$6,630	\$8,840	\$9,415	\$11,050	\$11,758	\$13,260	\$14,233	\$17,680	\$26,520



Medi-Cal for Adults

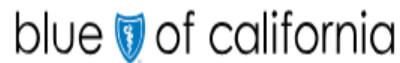
Medi-Cal for Pregnant Women

Medi-Cal Access Program (for Pregnant Women)

Medi-Cal for Kids (0-18 Yrs.)

County Children's Health Initiative Program

Note: Most consumers up to 138% FPL will be eligible for Medi-Cal. If ineligible for Medi-Cal, consumers may qualify for a Covered California health plan with financial help including: federal tax credit, California state subsidy, Enhanced Silver plans and AIAN plans.



Sliding Fee Scale at Clinica Sierra Vista

The discount program is for patients without health insurance or basic health coverage who cannot afford the cost of their medical or dental consultation. You may be eligible for Clinica Sierra Vista's discount program. The discount is based on family size and household income.

- Covers Medical and Dental services*, and specialty services*

*cost varies

Family Size	Gross Household Monthly Income									
	0% - 100%	101% - 133%	134% - 166%	167% - 200%	201%+					
1	0 - 1012	1,013 - 1,346	1,347 - 1679	1680 - 2023	2024					
2	0 - 1372	1,373 - 1,824	1,825 - 2277	2278 - 2743	2744					
3	0 - 1732	1,733 - 2,303	2,304 - 2875	2876 - 3463	3464					
4	0 - 2092	2,093 - 2,782	2,783 - 3472	3473 - 4183	4184					
5	0 - 2452	2,453 - 3,261	3,262 - 4070	4071 - 4903	4904					
6	0 - 2812	2,813 - 3,740	3,741 - 4667	4668 - 5623	5624					
7	0 - 3172	3,173 - 4,218	4,219 - 5265	5266 - 6343	6344					
8	0 - 3532	3,533 - 4,697	4,698 - 5863	5864 - 7063	7064					
9	0 - 3892	3,893 - 5,176	5,177 - 6460	6461 - 7783	7784					
10	0 - 4252	4,253 - 5,655	5,656 - 7058	7059 - 8503	8504					
11	0 - 4612	4,613 - 6,134	6,135 - 7655	7656 - 9223	9224					
12	0 - 4972	4,973 - 6,612	6,613 - 8253	8254 - 9943	9944					
13	0 - 5332	5,333 - 7,091	7,092 - 8851	8852 - 10663	10664					
14	0 - 5692	5,693 - 7,570	7,571 - 9448	9449 - 11383	11384					
15	0 - 6052	6,053 - 8,049	8,050 - 10046	10047 - 12103	12104					

FCL/Category	610/A			625/B			650/C		675/D	699/SP

Fees	Nominal Fee									
	\$10.00			\$20.00			\$30.00		\$40.00	100% of charges

Category	Medical	Dental
A	\$10	\$40
B	\$20	50%
C	\$30	75%
D	\$40	75%

Clinica Sierra Vista

Clinica Sierra Vista offers the following programs:

- Family Medicine
- Behavioral Health Services
- Internal Medicine
- Comprehensive Health Services
- Pediatrics
- Comprehensive Prenatal Specialty Services
- OBGYN
- Health Insurance Assistance Services
- Podology
- Nutrition Program WIC
- Vaccinations

Clinica Sierra Vista Medical Centers

Elm Walk-In Clinic

**2740 S. Elm Avenue
Fresno, CA 93706**

Monday - Sunday, 8:00 am – 8:00 pm

Elm Family Community Health Center

**2740 S. Elm Avenue
Fresno, CA 93706
559-457-5200**

Monday - Saturday, 8:00 am – 7:00 pm

Elm Women's & Pediatric Community Health Center

**2760 S. Elm Avenue
Fresno, CA 93706
559-457-5300**

Monday - Friday, 8:00 am – 7:00 pm

Garland Community Health Center

**3727 N. First Street, Suite 106
Fresno, CA 93726
559-457-6900**

Monday - Friday, 8:00 am – 5:00 pm

Gaston Health and Wellness Center

**1120 E. Church Avenue
Fresno, CA 93706
559-457-6700**

Monday - Friday, 7:30 am – 4:00 pm

North Fine Community Health Center

**1945 N. Fine Avenue, Suite 100
Fresno, CA 93727
559-457-5650**

Monday - Friday, 8:00 am – 5:00 pm

Orange & Butler Community Health Center

**1350 S. Orange Avenue
Fresno, CA 93702
559-457-5400**

Monday - Friday, 8:00 am – 5:00 pm

RMC Community Health Center

**2505 E. Divisadero Street
Fresno, CA 93721
559-457-5500**

Monday - Saturday, 8:00 am – 5:00 pm

West Fresno Community Health Center

**302 Fresno Street, Suite 101
Fresno, CA 93706
559-457-5700**

Monday - Friday, 8:00 am – 5:00 pm

West Shaw Community Health Center

**3645 W Shaw Avenue, Suite 101
Fresno, CA 93711
559-457-6800**

Monday - Friday, 8:30 am - 5:30 pm

Dental Offices and Behavioral Health

Dental Centers

Dental Center - Elm

2756 S. Elm Avenue

Fresno, CA 93706

559-457-5345

Monday - Saturday, 8:00 am – 7:00 pm

Dental Center - West Fresno

302 Fresno Street, Suite 204

Fresno, CA 93706

559-457-5780

Monday - Friday, 8:00 am – 5:00 pm

Behavioral Health Services in the following Health Centers

Community Resource Center

1305 E. Divisadero Avenue

559-457-5960

Elm Family Community Health Center

2740 S. Elm Avenue

Centro de Salud - Gaston

1120 E. Church Avenue

Centro de Salud - North Fine

1945 N. Fine Avenue, Suite 100

Centro de Salud - Orange & Butler

1350 S. Orange Avenue

Centro de Salud - West Shaw

3451 W. Shaw Avenue, Suite 102

SPECIALTY BEHAVIORAL HEALTH SERVICES

North Fine - Adultos

2002 N. Fine Avenue, Suite 100

559-457-6975

North Fine - Niños

2010 N. Fine Avenue, Suite 105

559-457-6976

West Fresno - Adultos y Niños

302 Fresno Street, Suite 106

559-457-5750

West Shaw - Adultos

3451 W. Shaw Avenue, Suite

101

West Shaw - Niños

3451 W. Shaw Avenue, Suite

102

For a medical appointment please call:

1-833-278-4584

For questions about Health Insurance

Eligibility please call

1-855-867-7216





RICHARD HEATH AND ASSOCIATES

May Ly

Program Specialist, CLCA



This WIOA, Title 1-financially assisted program/service is an equal opportunity employer/program. Auxiliary aids and services are available upon request to people with disabilities and/or limited English

A proud partner of America's Job Center of California™ network.



CALIFORNIA'S LOW COST AUTO (CLCA)

BY: MAY LY, PROGRAM SPECIALIST NORTHERN CALIFORNIA

March 2020



CALIFORNIA'S LOW COST AUTO PROGRAM

- CA LOW COST AUTO IS A STATE-SPONSORED PROGRAM, PASSED BY THE CA LEGISLATURE AND MANAGED BY THE CA DEPARTMENT OF INSURANCE.
- CLCA PROVIDES AFFORDABLE, LOW COST LIABILITY INSURANCE TO ELIGIBLE CALIFORNIA DRIVERS WHO MEET INCOME AND ELIGIBILITY GUIDELINES
- BENEFITS NOT JUST LOW-INCOME DRIVERS, MANY MIDDLE-CLASS HOUSEHOLDS MAY QUALIFY.
- APPLY ON-LINE AT: [MYLOWCOSTAUTO.COM](https://mylowcostauto.com)
 - CHAT FEATURE AVAILABLE FOR ASSISTANCE
 - WEBSITE AVAILABILITY IN SPANISH

ELIGIBILITY AND RATES



Household Size	Annual Income 250% of FPL
1	\$31,900
2	\$43,100
3	\$54,300
4	\$65,500
5	\$76,700
6	\$87,900

Zone 1 Counties: Fresno, Kings, Madera, Monterey, San Benito, San Luis Obispo, Santa Barbara, Santa Cruz, and Tulare

Base Rate \$244
Unmarried 19-24 Years \$317
Less Than 3 Years \$342
Drivers 16-18 Years \$488

Eligibility Guidelines:

- **Applicants must have a valid CA Driver's License**
- **Have a vehicle valued at \$25,000 or less**
- **Meet Income Guidelines**
- **Be at least 16**

CLCA offers two payment options: *Payment in full OR 20% down with 7 installment payments (Installment fee of \$4.00 applies)*



FRESNO COUNTY LIBRARY



This WIOA, Title 1-financially assisted program/service is an equal opportunity employer/program.
Auxiliary aids and services are available upon request to people with disabilities and/or limited English

A proud partner of America's Job Center of California™ network.

Online Services

Jobs & Career

<http://www.fresnolibrary.org/>

EBSCO LearningExpress®
Career Preparation

Career Preparation - LearningExpress

Are you preparing for a professional exam? Are you curious about a particular occupation or looking to improve your workplace skills? Prepare for an occupation exam in social work (ASWB), civil service, law enforcement, teaching (CBEST), and more! Choose the Career Preparation Center and begin your path to a bright future.



DigiBus

Learn computer basics and benefit from job readiness skills specific to Fresno. Resources in 8 subject areas, covering the complete job life cycle.



EBSCO LearningExpress®
Job & Career
Accelerator

Job & Career Accelerator - LearningExpress

Find a career match, explore occupations, search for jobs and internships, and tools to get hired. Browse the career library and college finder.



Job Now

Get online job and career coaching, resume assistance, and interview practice.



Lynda

Lynda.com helps anyone learn software, technology, creative, and business skills to achieve their personal and professional goals. Requires valid library barcode and PIN to use.





Lewis Reinholt

MANPOWER

What do we do?

Warehouse

Forklift
Pick/Pack
Shipping/Receiving
General Labor

Manufacturing

Assembly
Machinists
CNC Operators
Welders
Maintenance Mechanics
General Labor
Forklift
Quality Assurance

Food Processing

General Labor
Sanitation
Machine Operators
Forklift
Pick/Pack
Quality Control

Administrative Positions

Call Center
Admin Assts
Receptionists
Accounting

Contact Lewis Reinholt
559-260-7108 or email at
lewis.reinholt@manpower.com

Text Manpower at
44844 to apply.





WORKFORCE CONNECTION SERVICES

Annette Watkins

Outreach/Workshop Facilitator



This WIOA, Title 1-financially assisted program/service is an equal opportunity employer/program. Auxiliary aids and services are available upon request to people with disabilities and/or limited English

Adjustments to Workforce Connection COVID-19 Guidelines

Please visit our website to review the full copy of the guidelines:

www.workforce-connection.com

All career counseling and resource room services will be provided telephonically, via email and other technologies.

Hours of operation at Manchester Center **only** are:
8am to 5pm by **appointment only**

To schedule appointments call **(559) 230-4092**



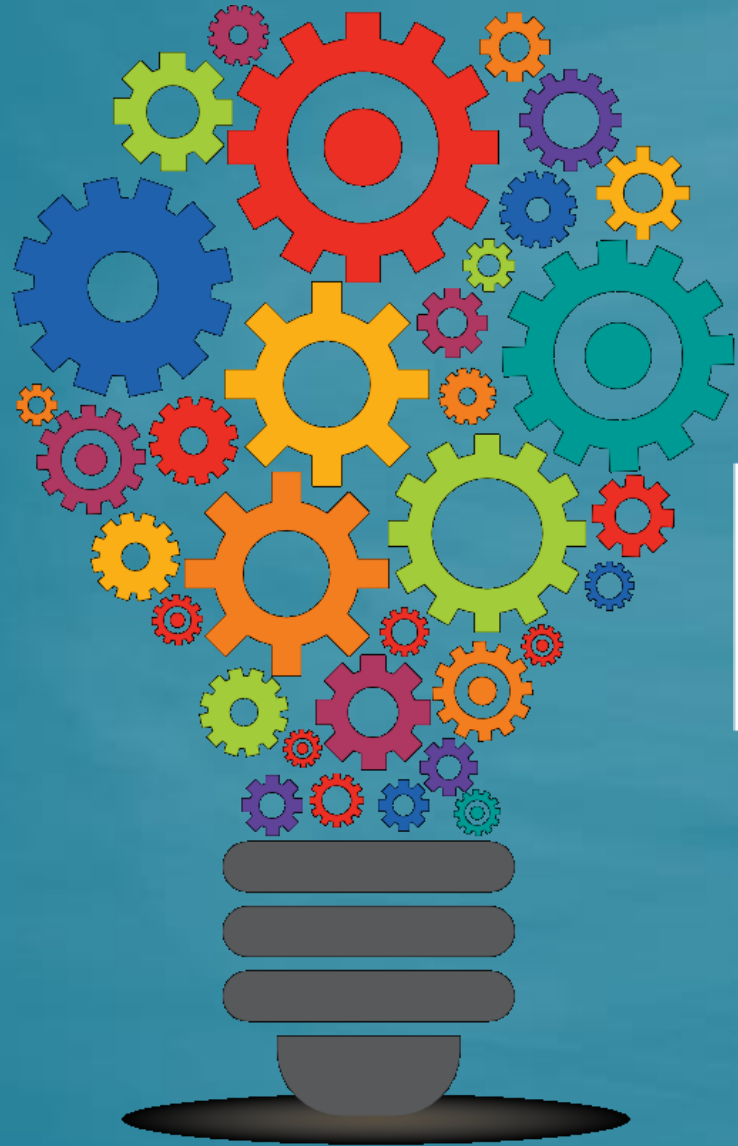
This WIOA, Title 1-financially assisted program/service is an equal opportunity employer/program. Auxiliary aids and services are available upon request to people with disabilities and/or limited English

What Does Workforce Connection Offer?

- **Self-Directed Services-Resource Room**
 - Internet Access
 - Phones to call employers
 - Fax to send out resumes
 - Copy Machine
- **Staff Assisted Services**
- **Training Services**
- **Referrals**

Staff Directed Services

- Career Assessments
- Career Guidance
- [Educational and Training Opportunities](#)
- Job Readiness Workshops
- Job Placement Assistance



RESOURCES

RESOURCES

- **City of Fresno**- There will be a 30-day moratorium on shutting off any water or garbage service for lack of payment.
- **Meal Distribution**-Most school districts are providing sack lunches, please look at your school district's website for time/school sites
- **Lenders**-Contact your mortgage and car loan lenders. Many of them may offer to defer payments if you specifically state that you have been impacted by COVID 19.
- **Price Gouging**-It's illegal to raise the price of essential goods, services, and lodging by more than 10 percent after an emergency has been declared. If you suspect a business is price gouging, please call 3-1-1 or the City Attorney's office at [\(559\) 621-8400](tel:5596218400).
- Tax Deadline has been moved to July 15, 2020

RESOURCES

➤ **Utilities-PG&E** Implemented a series of billing and service modifications to support customers who have been impacted by the pandemic:

- Suspending service disconnections for non-payment and waiving security deposits;
- Implementing flexible payment plan options; and
- Providing additional support for low-income and medical baseline customers.

Go to pge.com/covid19consumerprotections to learn more about our support for customers during these difficult times.

Customers are advised to be aware of scammers taking advantage of the current situation with calls and emails threatening to shut off power if a payment is not made. Anyone who has received such a call can report it immediately by calling PG&E at [1-800-743-5000](tel:1-800-743-5000) or visit pge.com/scams.

RESOURCES

- Fresno Business Services

<http://www.fresnobsc.com/>

- Fresno Economic Development Corporation

<https://www.fresnoedc.com/>

- City of Fresno and/or your local city website

<https://www.fresno.gov/coronavirus/>

- Fresno Unified School District and/or your local school district

<https://www.fresnounified.org/>



JOBS

Company/Organization	Contact Information/Link
Amazon	https://www.amazon.jobs/en-gb/
Aldi	https://careers.aldi.us/
Costco	https://www.costco.com/jobs.html
CVS Health-Here	https://bit.ly/2y2Sa3i
Dollar General	https://careers.dollargeneral.com/
Domino's	https://jobs.dominos.com/dominos-careers/
Papa John's	https://jobs.papajohns.com/
Save Mart	https://www.savemart.com/careers
Walmart	https://careers.walmart.com/

THANK YOU!

Martha Espinosa

559.490.7147

mepinosa@workforce-connection.com

mepinosa@wfc.co



Fresno Regional WDB
**Workforce
Connection**

This WIOA, Title 1-financially assisted program/service is an equal opportunity employer/program.
Auxiliary aids and services are available upon request to people with disabilities and/or limited English

A proud partner of America's Job Center of California™ network.